

Multi Step™ Basket - stamped in order from top to bottom
 All inks used - Memento (unless noted)



Step #3 - Espresso Truffle
 Step #2 - Rich Cocoa
 Step #1 - Toffee Crunch



Step #3 - Rich Cocoa
 Step #2 - Potter's Clay
 Step #1 - Peanut Brittle



Step #3 - Rich Cocoa
 Step #2 - Toffee Crunch
 Step #1 - Desert Sand



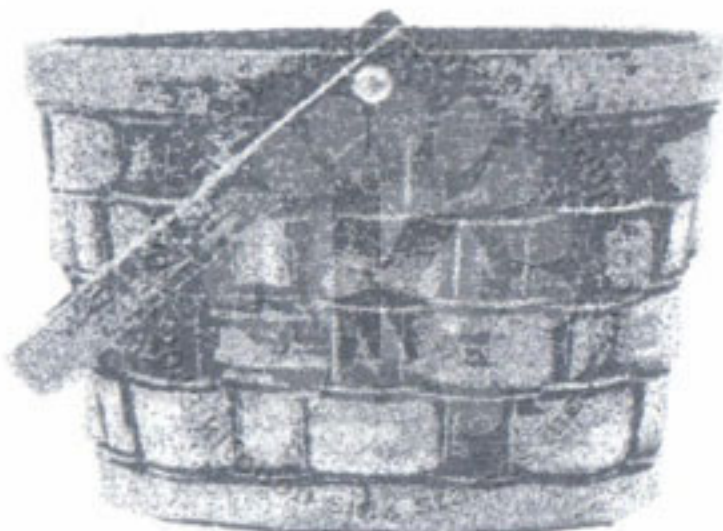
Step #3 - Rich Cocoa
 Step #2 - Rich Cocoa stamp off 1x
 Step #1 - Desert Sand



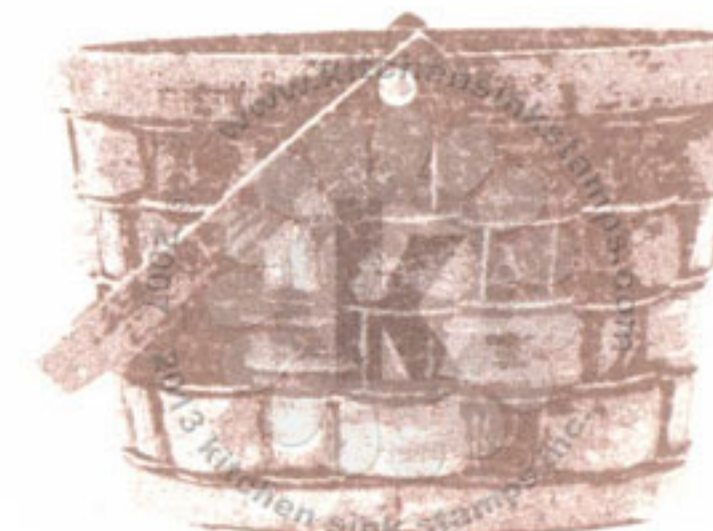
Step #3 - Tuxedo Black
 Step #2 - Gray Flannel
 Step #1 - London Fog



Step #3 - Rich Cocoa
 Step #2 - Rich Cocoa stamp off 1x
 Step #1 - Gray Flannel stamp off 1x



Step #3 - Gray Flannel
 Step #2 - Gray Flannel, stamp off 1x, repeat
 Step #1 - Gray Flannel, stamp off 1x



Step #3 - Toffee Crunch
 Step #2 - Rich Cocoa stamp off 1x
 Step #1 - Toffee Crunch stamp off 1x

Multi Step™ Basket - stamped in order from top to bottom
 All inks used - Memento (unless noted)



- Step #3 - Tuxedo Black
- Step #2 - Cottage Ivy
- Step #1 - Pistachio



- Step #3 - Toffee Crunch
- Step #2 - Peanut Brittle
- Step #1 - Peanut Brittle stamp off 1x



- Step #3 - Tuxedo Black
- Step #2 - Nautical Blue
- Step #1 - Teal Zeal stamp off 1x



- Step #3 - Rhubarb Stalk
- Step #2 - Peanut Brittle
- Step #1 - Cantaloupe



- Step #3 - Nautical Blue
- Step #2 - Teal Zeal stamp off 1x, repeat
- Step #1 - Summer Sky



- Step #3 - Grape Jelly
- Step #2 - Rhubarb Stalk
- Step #1 - Love Letter



- Step #3 - Espresso Truffle
- Step #2 - Peanut Brittle
- Step #1 - Cantaloupe



- Step #3 - Rhubarb Stalk
- Step #2 - Rose Bud
- Step #1 - Angel Pink