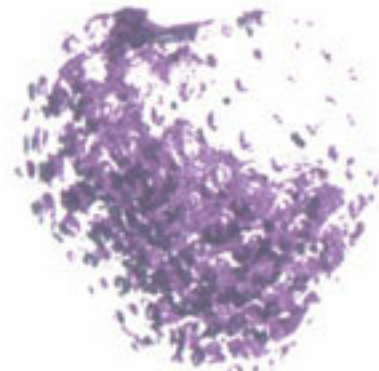


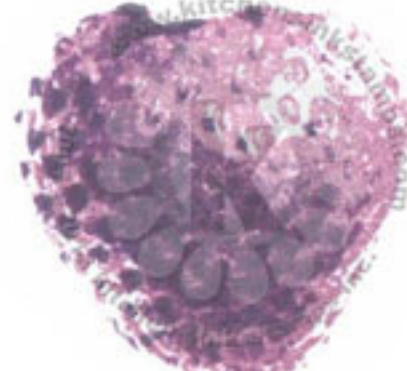
**Multi Step™ Berries (stamping backwards)**  
all inks from Tsukineko



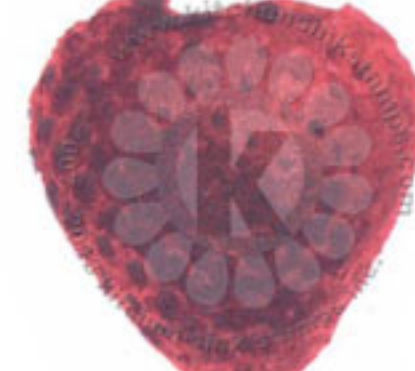
**Step #4**  
Imperial Purple  
VersaFine



**Step #3**  
Grape Jelly  
Memento



**Step #2**  
Sweet Plum  
Memento



**Step #1**  
Rhubarb Stalk  
Memento



**Step #3**  
Cottage Ivy  
Memento



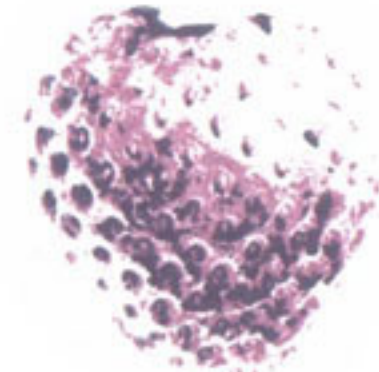
**Step #2**  
Bamboo Leaves  
stamp off 1x  
Repeat  
Memento



**Step #1**  
Pear Tart  
Memento



**Step #4**  
Imperial Purple  
VersaFine



**Step #3**  
Sweet Plum  
Memento



**Step #2**  
Rhubarb Stalk  
Memento



**Step #1**  
Lady Bug  
Memento



**Step #3**  
Grape Jelly  
Memento



**Step #2**  
Cottage Ivy  
Memento



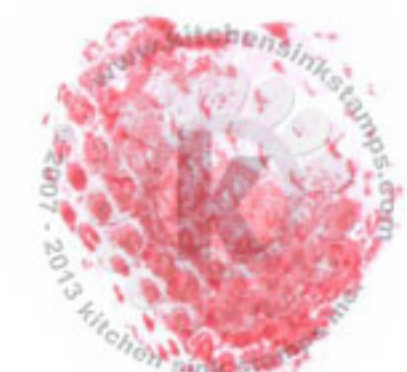
**Step #1**  
Pear Tart  
then stamp  
again with  
Bamboo Leaves  
stamp off 1x  
Memento



**Step #4**  
Rhubarb Stalk  
Memento



**Step #3**  
Lady Bug  
Memento



**Step #2**  
Angel Pink  
Memento



**Step #1**  
Angel Pink stamp off 1x  
Repeat 3x's - Memento



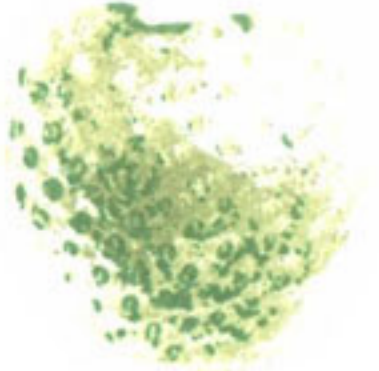
**Step #3**  
Cottage Ivy - Memento

**Step #2**  
Bamboo Leaves - Memento

**Step #1**  
Pear Tart - Memento



**Step #4**  
Cottage Ivy  
Memento



**Step #3**  
Bamboo Leaves  
stamp off 1x  
Memento



**Step #2**  
New Sprout  
Memento



**Step #1**  
Wheat 2x's  
VersaMagic





**Multi Step™ Berries** - stamped in order from top to bottom  
 All inks used - Memento (unless noted)



Step #3 - Northern Pine

Step #2 - Cottage Ivy

Step #1 - Bamboo Leaves stamp off 1x



Step #4 - Elderberry

Step #3 - Grape Jelly

Step #2 - Love Letter

Step #1 - Lady Bug



Step #3 - Northern Pine

Step #2 - Cottage Ivy

Step #1 - Pear Tart



Step #3 - Northern Pine

Step #2 - Olive Grove

Step #1 - Pear Tart



Step #4 - Grape Jelly

Step #3 - Love Letter

Step #2 - Lady Bug

Step #1 - Lady Bug stamp off 1x



Step #3 - Northern Pine

Step #2 - Olive Grove

Step #1 - Pistachio  
 stamp again  
 with Dandelion

Step #3 - Olive Grove

Step #2 - Pistachio

Step #1 - Pear Tart



Step #4 - Grape Jelly

Step #3 - Love Letter

Step #2 - Lady Bug

Step #1 - Lady Bug stamp off 1x



Step #3 - Olive Grove

Step #2 - Pistachio

Step #1 - Pear Tart



**Multi Step™ Berries** - stamped in order from top to bottom  
 All inks used - Memento (unless noted)

**Step #2 - Cottage Ivy**

**Step #1 - Bamboo Leaves**



**Step #3 - Cottage Ivy**

**Step #2 - Bamboo Leaves**

**Step #1 - Pear Tart**

**Step #3 - Olive Grove**

**Step #2 - Pistachio 2x's**

**Step #1 - Bamboo Leaves**



**Step #3 - Northern Pine**

**Step #2 - Olive Grove**

**Step #1 - Pistachio**



**Step #2 - Olive Grove**

**Step #1 - Pistachio**



**Step #3 - Rhubarb Stalk**

**Step #2 - Lady Bug**

**Step #1 - Angel Pink 2x's**



**Step #3 - Grape Jelly**

**Step #2 - Lilac Posies**

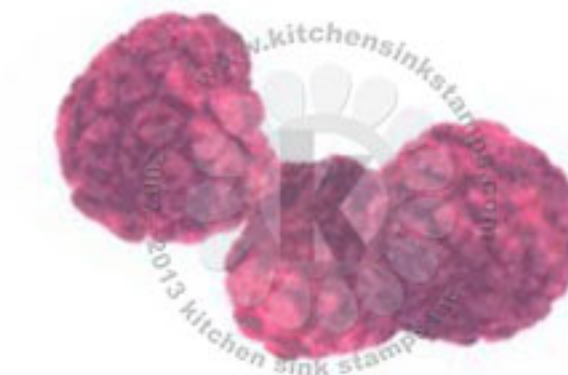
**Step #1 - Rose Bud**



**Step #3 - Grape Jelly**

**Step #2 - Rhubarb Stalk**

**Step #1 - Lady Bug**



**Step #3 - Grape Jelly**

**Step #2 - Sweet Plum**

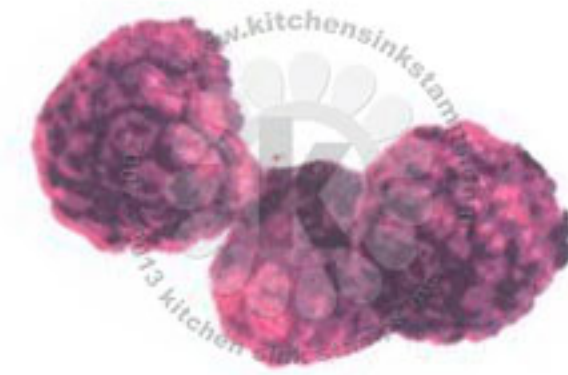
**Step #1 - Lilac Posies**



**Step #3 - Elderberry**

**Step #2 - Sweet Plum 2x's**

**Step #1 - Rose Bud**  
stamp again - Lady Bug



**Step #3 - Elderberry**

**Step #2 - Grape Jelly**

**Step #1 - Lilac Posies**



**Step #3 - Elderberry**

**Step #2 - Grape Jelly**

**Step #1 - Rhubarb Stalk**



**Multi Step™ Berries** - stamped in order from top to bottom  
 All inks used - Memento (unless noted)

**Step #2 - Northern Pine**

**Step #1 - Pistachio**



**Step #3 - Olive Grove**  
**Step #2 - Pistachio**  
**Step #1 - Pear Tart**

**Step #3 - Northern Pine**

**Step #2 - Pistachio 2x's**

**Step #1 - Bamboo Leaves**



**Step #3 - Pistachio**  
**Step #2 - New Sprout**  
**Step #1 - Dandelion stamp off 1x**

**Step #2 - Bamboo Leaves**

**Step #1 - Part Tart**



**Step #3 - Bamboo Leaves**  
**Step #2 - Pear Tart 2x's**  
**Step #1 - New Sprout**



**Step #2 - Dandelion**  
**Step #3 - Desert Sand**  
**Step #1 - Cantaloupe stamp off 1x, repeat**



**Step #3 - Elderberry**  
**Step #2 - Paris Dusk**  
**Step #1 - Grape Jelly**



**Step #3 - Peanut Brittle**  
**Step #2 - Cantaloupe 2x's**  
**Step #1 - Dandelion**



**Step #3 - Elderberry**  
**Step #2 - Grape Jelly**  
**Step #1 - Sweet Plum stamp off 1x**



**Step #3 - Peanut Brittle**  
**Step #2 - Tangelo**  
**Step #1 - Cantaloupe**



**Step #3 - Grape Jelly**  
**Step #2 - Sweet Plum**  
**Step #1 - Sweet Plum stamp off 1x**



**Multi Step™ Berries** - stamped in order from top to bottom  
 All inks used - Memento (unless noted)

**Step #2 - Northern Pine**

**Step #1 - Cottage Ivy**



**Step #3 - Paris Dusk**

**Step #2 - Danube Blue**

**Step #1 - Danube Blue stamp off 1x**

**Step #4 - Elderberry**

**Step #2 - Northern Pine**

**Step #1 - Bamboo Leaves**



**Step #3 - Paris Dusk**

**Step #2 - Danube Blue stamp off 1x**

**Step #1 - Danube Blue stamp off 2x's**

**Step #4 - Elderberry**

**Step #2 - Olive Grove**

**Step #1 - Bamboo Leaves**



**Step #3 - Danube Blue**

**Step #2 - Danube Blue stamp off 1x**

**Step #1 - Danube Blue stamp off 2x's**

**Step #4 - Nautical Blue**



**Multi Step™ Berries** - stamped in order from left to right  
 All inks used - Memento (unless noted)



**Step #3**  
**Imperial Purple**  
 Versa Fine



**Step #2**  
**Danube Blue**



**Step #1**  
**Danube Blue**  
 stamp off 1x



**Step #5**  
**Paris Dusk**



**Step #2**  
**Olympia Green**  
 VersaFine



**Step #1**  
**Cottage Ivy**



**Step #2**  
**Olympia Green**  
 VersaFine



**Step #1**  
**Bamboo Leaves**



**Step #3**  
**Imperial Purple**  
 Versa Fine



**Step #2**  
**Mediterranean Blue**  
 Brilliance



**Step #1**  
**Mediterranean Blue**  
 stamp off 1x  
 Brilliance



**Step #4**  
**Onyx Black**  
 Versa Fine



**Step #2**  
**Cottage Ivy**



**Step #1**  
**Bamboo Leaves**



**Step #2**  
**Cottage Ivy**



**Step #1**  
**Cottage Ivy**  
 stamp off 1x



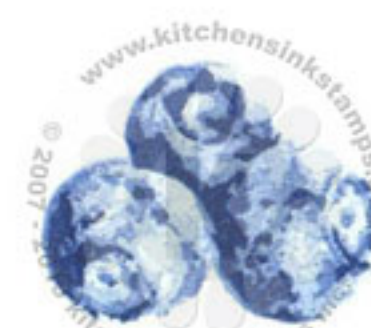
**Step #3**  
**Mediterranean Blue**  
 Brilliance



**Step #2**  
**Mediterranean Blue**  
 stamp off 1x  
 Brilliance



**Step #1**  
**Aegean Blue**  
 stamp off 1x  
 VersaMagic



**Step #4**  
**Majestic Blue**  
 Versa Fine



**Step #2**  
**Olympia Green**  
 VersaFine



**Step #1**  
**Pearlescent Thyme**  
 Brilliance



**Step #2**  
**Olympia Green**  
 VersaFine



**Step #1**  
**Tea Leaves**  
 VersaMagic



**Step #3**  
**Mediterranean Blue**  
 Brilliance



**Step #2**  
**Mediterranean Blue**  
 stamp off 1x  
 Brilliance



**Step #1**  
**Pearlescent Sky Blue**  
 stamp off 1x  
 Brilliance



**Step #4**  
**Night Sky**  
 VersaMagic



**Step #1**  
**Gamma Green**  
 Brilliance



**Step #2**  
**Olympia Green**  
 VersaFine