

Multi Step™ Classic Old Truck - stamped in order from top to bottom
All inks used - Memento (unless noted)



Base:

Step #3a - Tuxedo Black

Step #2a - Tuxedo Black stamp off 1x, Repeat

Step #1a - Tuxedo Black stamp off 1x

Body:

Step #3b - Espresso Truffle

Step #2b - Tuxedo Black

Step #1b - Tuxedo Black stamp off 1x

Step #4b - did not use



Base:

Step #3a - Tuxedo Black

Step #2a - Gray Flannel

Step #1a - Gray Flannel stamp off 1x



Base:

Step #3a - Espresso Truffle

Step #2a - Gray Flannel

Step #1a - Gray Flannel stamp off 1x



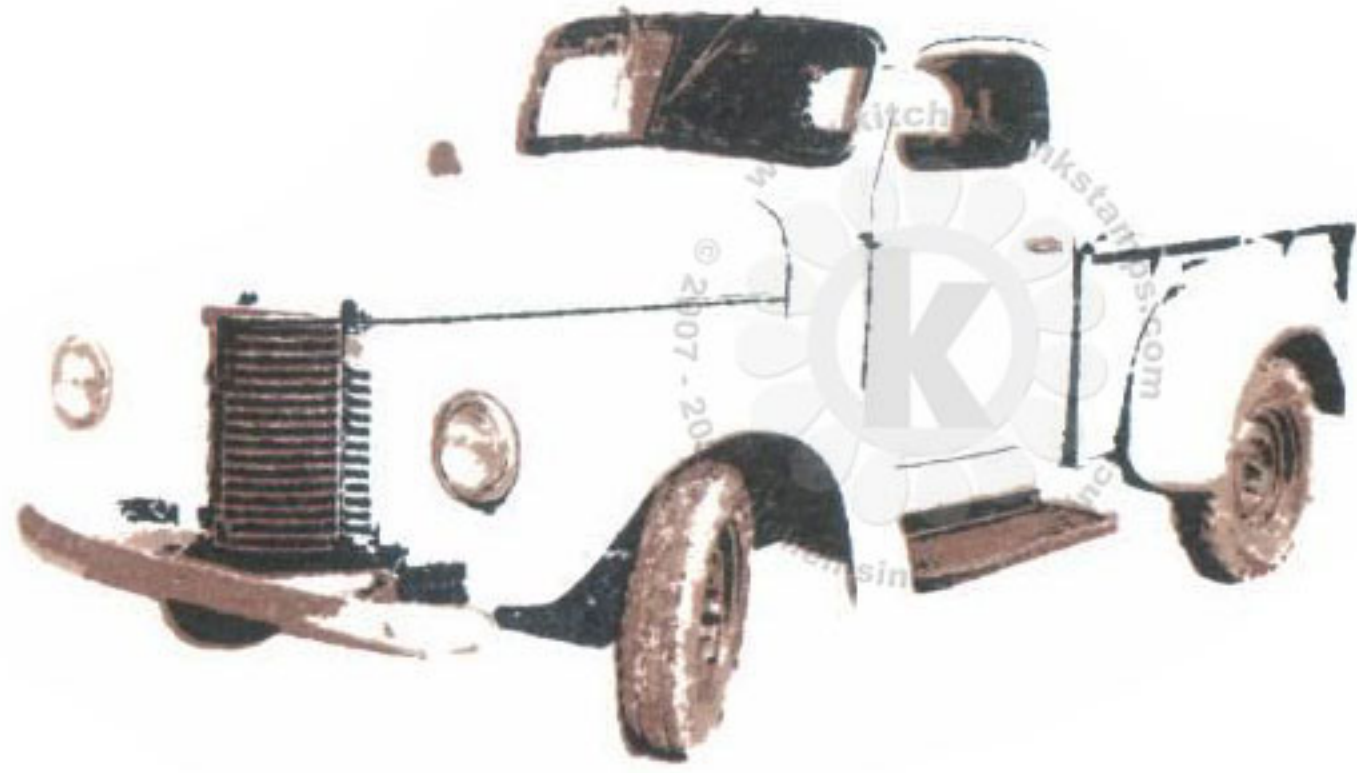
Base:

Step #3a - Gray Flannel

Step #2a - Starlight Black (Brilliance)

Step #1a - Starlight Silver (Brilliance)

Multi Step™ Classic Old Truck - stamped in order from top to bottom
All inks used - Memento (unless noted)



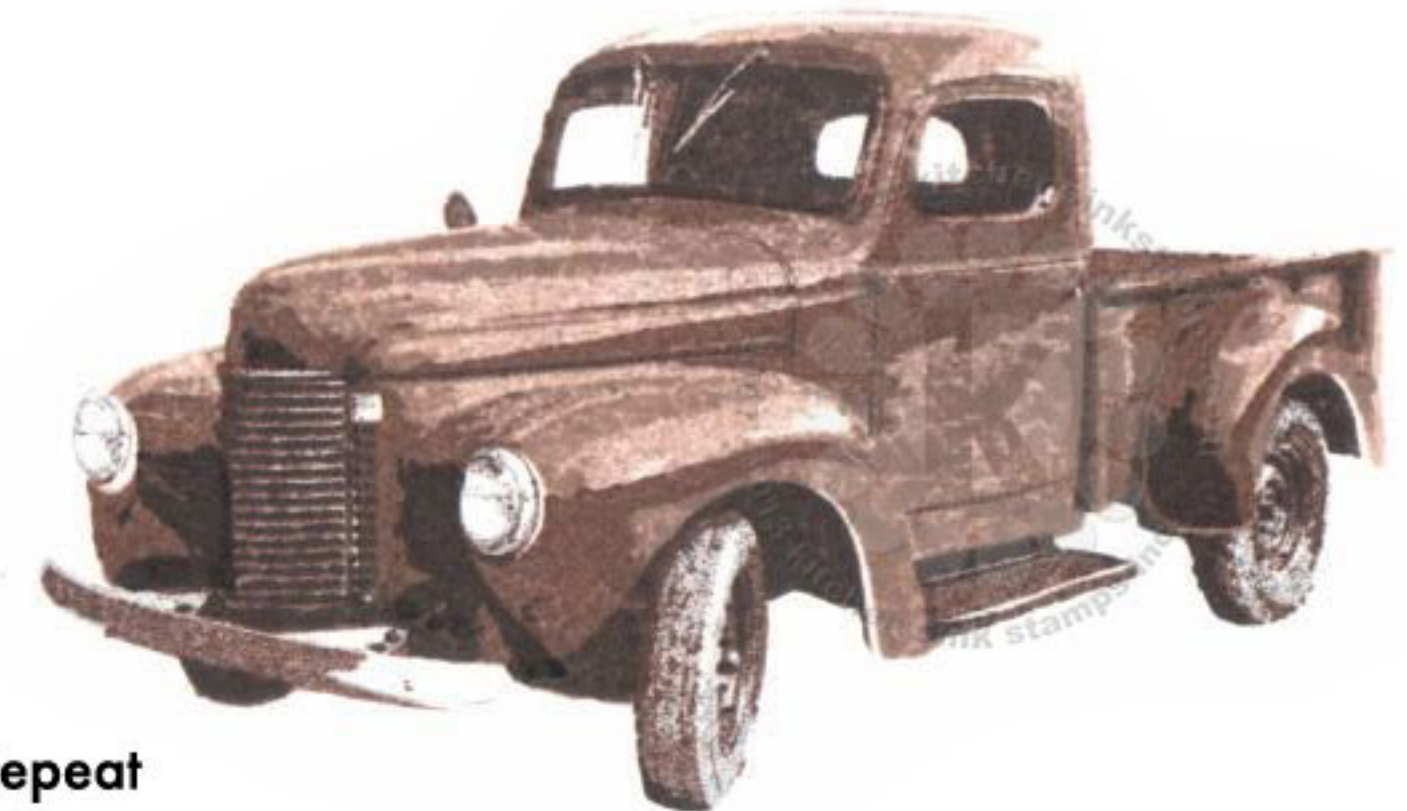
- Base:
- Step #3a - Tuxedo Black
- Step #2a - Rich Cocoa
- Step #1a - Toffee Crunch



- Base:
- Step #3a - Rich Cocoa
- Step #2a - Toffee Crunch
- Step #1a - Desert Sand



- Base:
- Step #3a - Espresso Truffle
- Step #2a - Rich Cocoa
- Step #1a - Espresso Truffle stamp off 1x
- Body:
- Step #3b - Rich Cocoa
- Step #2b - Toffee Crunch
- Step #1b - Toffee Crunch stamp off 1x, Repeat + Desert Sand
- Step #4b - Espresso Truffle



Multi Step™ Classic Old Truck - stamped in order from top to bottom
 All inks used - Memento (unless noted)



Body:
 Step #3b - Grape Jelly
 Step #2b - Sweet Plum
 Step #1b - Rhubarb Stalk
 + Love Letter
 Step #4b - Elderberry



Body:
 Step #3b - Sweet Plum
 Step #2b - Rhubarb Stalk
 Step #1b - Lady Bug
 Step #4b - Grape Jelly



Body:
 Step #3b - Love Letter
 Step #2b - Love Letter
 stamp off 1x
 + Lady Bug
 Step #1b - Lady Bug
 Step #4b - Rhubarb Stalk



Body:
 Step #3b - Bahama Blue
 Step #2b - Bahama Blue
 stamp off 1x,
 Repeat
 + Summer Sky
 Step #1b - Summer Sky
 + Bahama Blue
 stamp off 1x
 Step #4b - Teal Zeal



Body:
 Step #3b - Paris Dusk
 Step #2b - Danube Blue
 Step #1b - Danube Blue
 stamp off 1x
 + Summer Sky
 Step #4b - Espresso Truffle



Body:
 Step #3b - Danube Blue
 Step #2b - Paris Dusk
 stamp off 1x,
 Repeat
 + Danube Blue
 stamp off 1x
 Step #1b - Danube Blue
 stamp off 1x
 + Paris Dusk
 stamp off 1x
 Step #4b - Grape Jelly

Multi Step™ Classic Old Truck - stamped in order from top to bottom
All inks used - Memento (unless noted)



Body:
Step #3b - Nautical Blue
Step #2b - Teal Zeal
Step #1b - Bahama Blue
Step #4b - Tuxedo Black



Body:
Step #3b - Olive Grove
Step #2b - Bamboo Leaves
+ Cottage Ivy
stamp off 1x
Step #1b - Pistachio
+ Pear Tart
Step #4b - Northern Pine



Body:
Step #3b - Danube Blue
stamp off 1x
Step #2b - Danube Blue
stamp off 2x's
+ Summer Sky
Step #1b - Summer Sky
Step #4b - Paris Dusk



Body:
Step #3b - Northern Pine
Step #2b - Olive Grove
Step #1b - Pistachio
Step #4b - Espresso Truffle

Multi Step™ Classic Old Truck - stamped in order from top to bottom
All inks used - Memento (unless noted)



- Body:**
 Step #3b - Peanut Brittle
 Step #2b - Cantaloupe
 + Dandelion
 + Peanut Brittle
 stamp off 1x
 Step #1b - Dandelion 2x's
 Step #4b - Potter's Clay



- Body:**
 Step #3b - Grape Jelly
 Step #2b - Sweet Plum
 + Lilac Posies
 Step #1b - Grape Jelly
 stamp off 1x
 + Lulu Lavender
 Step #4b - Elderberry



- Body:**
 Step #3b - Potter's Clay
 Step #2b - Potter's Clay
 stamp off 1x,
 Repeat
 + Tangelo
 Step #1b - Tangelo
 + Dandelion
 Step #4b - Rich Cocoa



- Body:**
 Step #3b - Lilac Posies
 Step #2b - Lilac Posies
 stamp off 1x,
 Repeat
 + Lulu Lavender
 Step #1b - Lulu Lavender
 Step #4b - Grape Jelly
 stamp off 1x



- Body:**
 Step #3b - Toffee Crunch
 Step #2b - Toffee Crunch
 stamp off 1x,
 Repeat
 + Rich Cocoa
 stamp off 1x
 Step #1b - Toffee Crunch
 stamp off 1x
 Step #4b - Rich Cocoa



- Body:**
 Step #3b - Rose Bud
 Step #2b - Rose Bud
 stamp off 1x,
 Repeat
 + Angel Pink
 Step #1b - Angel Pink 2x's
 Step #4b - Love Letter