

**Multi Step™ Grizzly Bear Wishes** - stamped in order from top to bottom  
 All inks used - Memento (unless noted)



- Step #4 - Espresso Truffle
- Step #3 - Rich Cocoa
- Step #2 - Rich Cocoa stamp off 1x, repeat
- Step #1 - Rich Cocoa stamp off 1x



- Step #4 - Espresso Truffle
- Step #3 - Rich Cocoa
- Step #2 - Potter's Clay
- Step #1 - Desert Sand



- Step #4 - Espresso Truffle
- Step #3 - Rich Cocoa
- Step #2 - Toffee Crunch
- Step #1 - Toffee Crunch stamp off 1x



- Step #4 - Tuxedo Black
- Step #3 - Rich Cocoa
- Step #2 - Gray Flannel stamp off 1x, repeat
- Step #1 - Rich Cocoa stamp off 1x



- Step #4 - Espresso Truffle
- Step #3 - Rich Cocoa stamp 2x's
- Step #2 - Rich Cocoa
- Step #1 - Rich Cocoa stamp off 1x
- Step #4 - Espresso Truffle (again as a 5th step)



- Step #4 - Tuxedo Black
- Step #3 - Espresso Truffle
- Step #2 - Gray Flannel
- Step #1 - Gray Flannel stamp off 1x
- Step #4 - Tuxedo Black (again as a 5th step)



**Multi Step™ Grizzly Bear Wishes** - stamped in order from top to bottom  
 All inks used - Memento (unless noted)



- Step #4 - Espresso Truffle
- Step #3 - Danube Blue
- Step #2 - Bahama Blue
- Step #1 - Summer Sky



- Step #3 - Sweet Plum
- Step #2 - Rhubarb Stalk
- Step #1 - Lady Bug

- Step #3 - Gray Flannel stamp off 1x
- Step #2 - Gray Flannel stamp off 2x's
- Step #1 - did not use  
 (option: w/clear embossing powder)



- Step #4 - Espresso Truffle
- Step #3 - Rich Cocoa
- Step #2 - Peanut Brittle
- Step #1 - Desert Sand +  
 Peanut Brittle stamp off 1x



- Step #3 - Rich Cocoa
- Step #2 - Rhubarb Stalk
- Step #1 - Lady Bug

- Step #3 - Gray Flannel stamp
- Step #2 - Gray Flannel stamp off 1x, repeat
- Step #1 - Gray Flannel stamp off 2x's



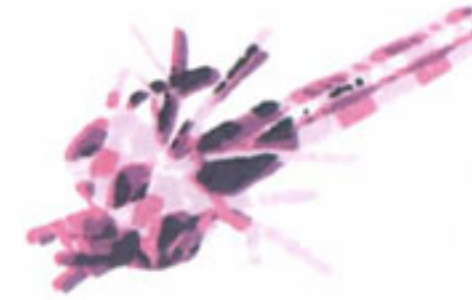
- Step #4 - Tuxedo Black
- Step #3 - Olive Grove
- Step #2 - Pistachio
- Step #1 - Pear Tart



**Multi Step™ Grizzly Bear Wishes** - stamped in order from top to bottom  
 All inks used - Memento (unless noted)



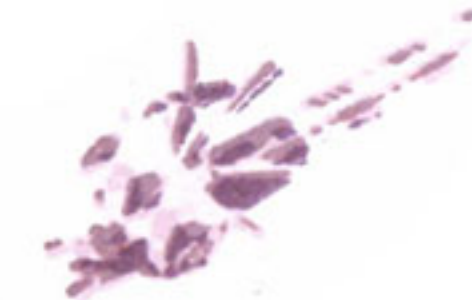
- Step #3 - Nautical Blue
- Step #2 - Danube Blue
- Step #1 - Lilac Posies



- Step #3 - Grape Jelly
- Step #4 - Tuxedo Black
- Step #2 - Lilac Posies
- Step #1 - Lulu Lavender



- Step #3 - Grape Jelly
- Step #2 - Sweet Plum
- Step #1 - Lulu Lavender



- Step #4 - Grape Jelly
- Step #3 - Sweet Plum
- Step #2 - Lulu Lavender
- Step #1 - Lulu Lavender stamp off 1x, repeat



- Step #3 - Love Letter
- Step #2 - Rose Bud
- Step #1 - Angel Pink



- Step #4 - Love Letter
- Step #3 - Rose Bud
- Step #2 - Rose Bud stamp off 1x, repeat
- Step #1 - Angel Pink



- Step #3 - Tuxedo Black
- Step #2 - Love Letter
- Step #1 - Love Letter stamp off 1x



- Step #4 - Tuxedo Black
- Step #3 - Sweet Plum
- Step #2 - Lady Bug
- Step #1 - Lady Bug stamp off 1x, repeat



**Multi Step™ Grizzly Bear Wishes** - stamped in order from top to bottom  
 All inks used - Memento (unless noted)



**Step #3 - Love Letter**

**Step #2 - Tangelo**

**Step #1 - Dandelion**

**Step #4 - Love Letter**

**Step #3 - Potter's Clay**

**Step #2 - Tangelo**

**Step #1 - Dandelion**



**Step #3 - Tuxedo Black**

**Step #2 - Tangelo**

**Step #1 - Cantaloupe**

**Step #4 - Tuxedo Black**

**Step #3 - Potter's Clay**

**Step #2 - Tangelo**

**Step #1 - Tangelo stamp off 1x**



**Step #3 - Tuxedo Black**

**Step #2 - Gray Flannel**

**Step #1 - Gray Flannel stamp off 1x**

**Step #4 - Tuxedo Black**

**Step #3 - Gray Flannel**

**Step #2 - Gray Flannel stamp off 1x, repeat**

**Step #1 - Gray Flannel stamp off 1x**



**Step #3 - Danube Blue**

**Step #2 - Summer Sky**

**Step #1 - Angel Pink**

**Step #4 - Danube Blue**

**Step #3 - Danube Blue stamp off 1x, repeat**

**Step #2 - Summer Sky**

**Step #1 - Angel Pink**





**Multi Step™ Grizzly Bear Wishes** - stamped in order from top to bottom  
 All inks used - Memento (unless noted)



- Step #3 - Bahama Blue
- Step #2 - Summer Sku 2x's
- Step #1 - Summer Sky



- Step #4 - Danube Blue
- Step #3 - Danube Blue stamp off 1x, repeat
- Step #2 - Summer Sky 2x's
- Step #1 - Summer Sky



- Step #3 - Lilac Posies
- Step #2 - Teal Zeal
- Step #1 - Summer Sky



- Step #4 - Lilac Posies
- Step #3 - Teal Zeal
- Step #2 - Teal Zeal stamp off 1x
- Step #1 - Summer Sky



- Step #3 - Danube Blue
- Step #2 - Bahama Blue
- Step #1 - Pear Tart



- Step #4 - Danube Blue
- Step #3 - Bahama Blue
- Step #2 - Pear Tart 2x's
- Step #1 - Pear Tart



- Step #3 - Grape Jelly
- Step #2 - Bamboo Leaves
- Step #1 - New Sprout + Dandelion



- Step #4 - Grape Jelly
- Step #3 - Bamboo Leaves
- Step #2 - Pear Tart 2x's
- Step #1 - New Sprout + Dandelion