



Multi Step™ Stamping 102

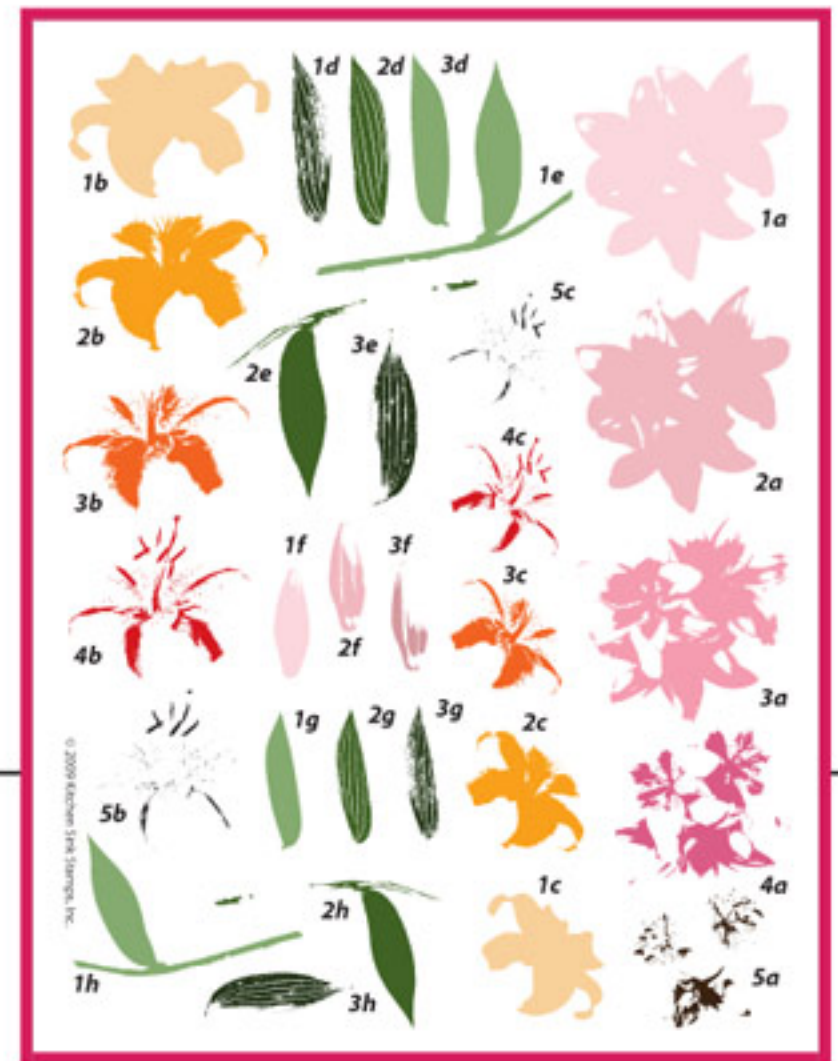
(stamping *backwards* or *out of order* to aid in lining up stamps)

with Multi Step™ Lilies

by Maria Colosimo

Materials:

- acrylic stamping blocks
- inks



Please note: the set in this tutorial has some stains by some inks. The staining does not effect the quality of the stamps.

Stamping **backwards** or **out of order** can really help line up steps that may be tricky to line up or when using very pale colors for steps 1 and 2.



TIP: When stamping an image that can be challenging to find corners or edges that line up, try placing each stamp on its own block. Have each step lined up and going in the same direction (use ID film as a guide). Number each block with a Sharpie marker to show which step the stamp is before stamping. The Sharpie marker can be removed from the block by wiping it clean with rubbing alcohol.

Stamping Backwards

- Still use your lightest color for step #1 and your darkest color for step #5.
- Instead of stamping in order 1, 2, 3, 4 & 5 this tutorial is about stamping backwards.... 5, 4, 3, 2 & 1.
- Try to find a common edge, corner or shape that is in each step. (see photo.1 - &).

step #5



photo.2

Stamp Step 5b first:

Onyx Black (VersaFine) was used for this step.

Photo.2 shows stamps on blocks image side down towards paper.

photo.2a



Photo.2a shows stamped step #5 image.

step #4

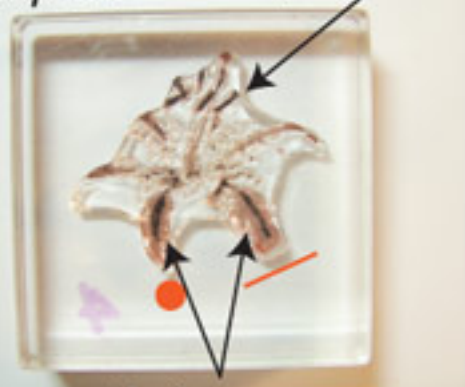


photo.3

Stamp Step 4b next:

Rich Cocoa (Memento) was used for this step.

Looking directly over step #4 stamp and block, look straight down, through the block and stamp to the stamped image below. The stamped image (step #5) will be a bit smaller than the next step and will help line up the next stamp.

Photo.3 - Using the bottom two petal veins and six pollen "lines" of the stamen from step #5, center the petals and line up the larger pollen "lines" for stamping step #4. Because step #4 has the same amount of pollen lines as in step #5, this area should overlay and match up quite easily.

photo.3a



Photo.3a shows stamped step #4 image on top of step #5.

step #3

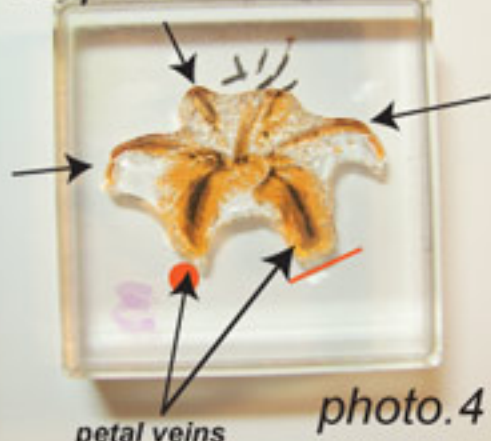


photo.4

Stamp Step 3b next:

Tangelo (Memento) was used for this step.

Use same method as above with stamping step #4.

Photo.4 - Now the petals & petal veins are taking shape with five petals. These petals will help line up the next steps as the petals get larger for stamping step #3.

photo.4a



Photo.4a shows stamped step #3 image on top of previous steps.

step #2



photo.5

Stamp Step 2b next:

Tangelo - stamp off 1x (Memento) was used for this step.

Use same method as above with stamping step #3.

Photo.5 - Again the petals help line up as the petals get larger for stamping step #2.

photo.5a



Photo.5a shows stamped step #2 image on top of previous steps.

step #1



photo.6

Stamp Step 1b next:

Dandelion (Memento) was used for this step.

Use same method as above with stamping step #2.

Photo.6 - Repeat as above for last step.

photo.6a



Photo.6a shows stamped step #1 image and finished Lily flower.

Stamping Out of Order

Stamping out of order is done when the last step does not give enough image information to line up the next step. Instead, start with the next step (step #4) and proceed backwards to step #1 and then finish by going back to the last step (step #5).



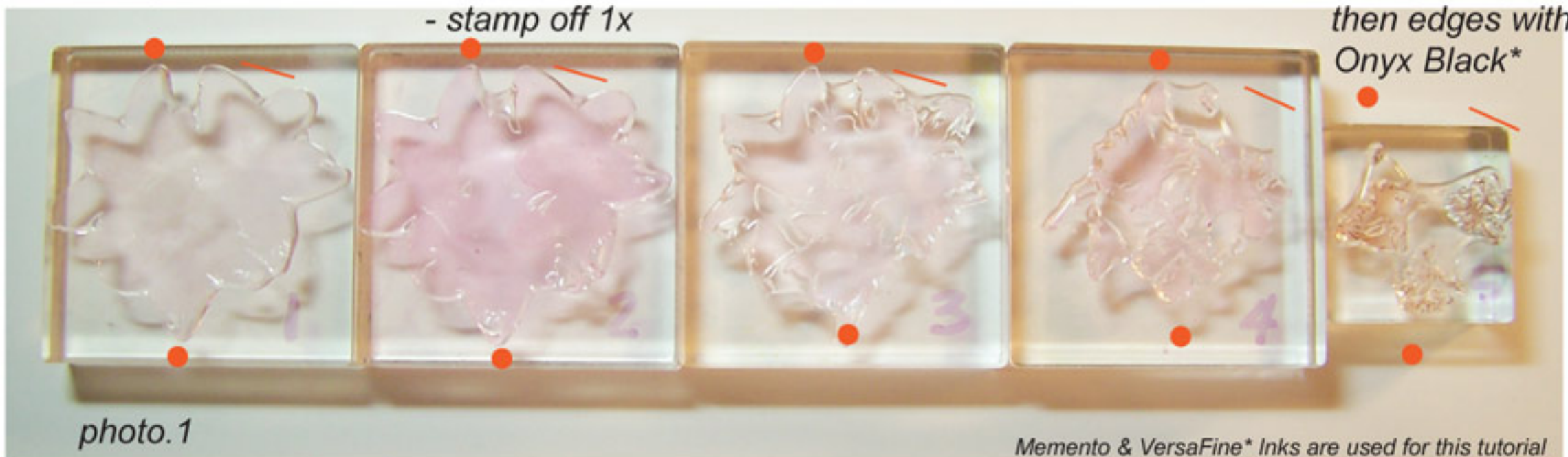
step #1
Angel Pink

step #2
Lilac Posies
- stamp off 1x

step #3
Lilac Posies

step #4
Sweet Plum

step #5
Vintage Sepia &
then edges with
Onyx Black*



Memento & VersaFine* Inks are used for this tutorial
Photo.1 shows stamps on blocks image side up.

- Still use your lightest color for step #1 and your darkest color for step #5.
- Instead of stamping in order 1, 2, 3, 4 & 5 this tutorial is about stamping out of order.... 4, 3, 2, 1 & 5. All other instruction from stamping backward applies.
- Try to find a common edge, corner or shape that is in each step. (see photo.1 - & ●).

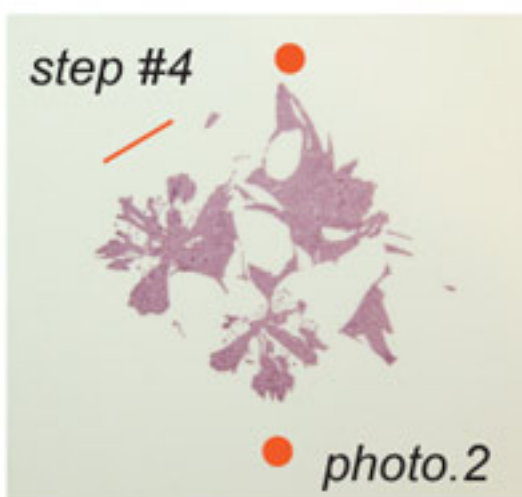


Photo.2 shows stamped image.

1st stamp
Step 4a
Sweet Plum (Memento)
was used for this step.

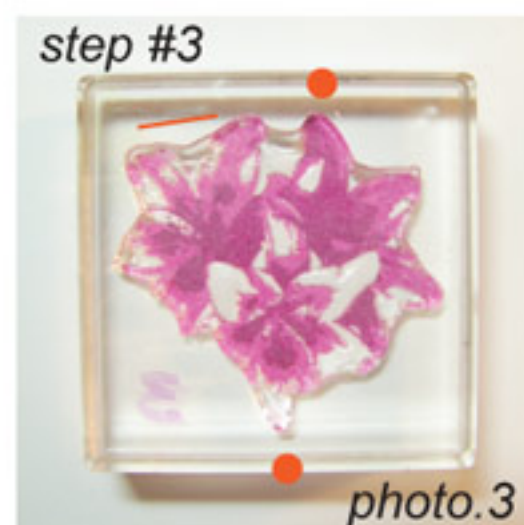


Photo.3 shows stamping step #3
on top of step #4.

next stamp
Step 3a
Lilac Posies (Memento) was used
for this step.

Looking directly over
step #3 stamp and
block, look straight
down, through to the
stamped image below.
Using the red dots as a
guide, line up the end
points of the petals.

step #2



photo.4

Photo.4 shows stamping step #2 on top of step #3 & #4.

next stamp

Step 2a

Lilac Posies - stamp off 1x (Memento) was used for this step.

Same as the previous step, looking directly over step #2 stamp and block, straight down, through to the stamped image below. Using the red dots as a guide to line up the end points of the petals. The petals are starting to fill in.

step #1

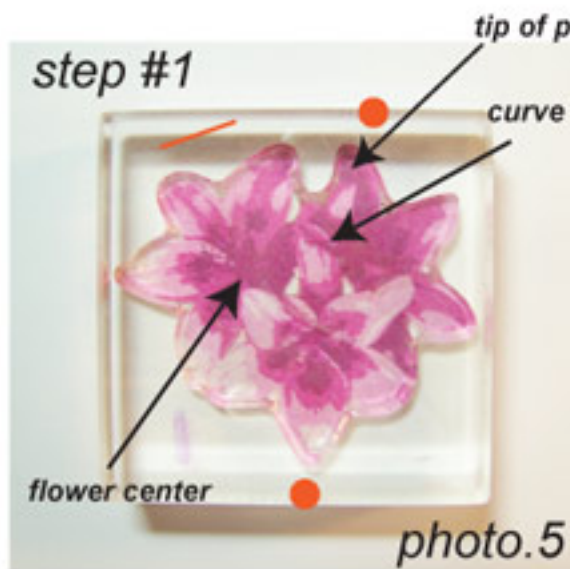


photo.5

Photo.5 shows stamping step #1 on top of steps #2, #3 & #4.

next stamp

Step 1a

Angle Pink (Memento) was used for this step.

Same as the previous step.

step #5

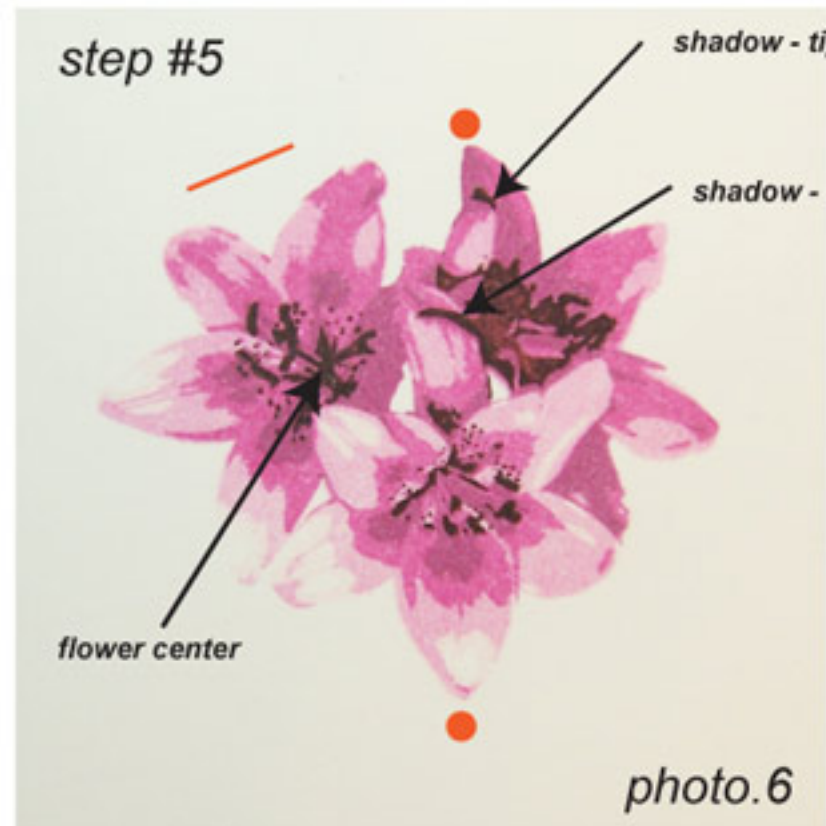


photo.6

Photo.6 shows stamping step #5 as the final step.

next stamp

Step 5a

Vintage Sepia, then daub Onyx Black to the edges before stamping. (VersaFine) was used for this step.

For the final step, refer to the area and shapes indicated by arrows in photo.6: shadow tip of petal, curve shadow of petal and the of flower on the left to help line up step #5.



Lining up the last step.