

Multi Step™ Grand Peony - stamped in order from top to bottom
 All inks used - Memento (unless noted)



- Step #5 - Rhubarb Stalk
- Step #4 - Lady Bug
- Step #3 - Rose Bud
- Step #2 - Angel Pink 2x's
- Step #1 - Angel Pink



- Step #4 - Lilac Posies
- Step #3 - Rose Bud
- Step #2 - Angel Pink 2x's
- Step #1 - Lulu Lavender



- Step #5 - Grape Jelly
- Step #4 - Lilac Posies
- Step #3 - Rose Bud
- Step #2 - Rose Bud
- Step #1 - Lulu Lavender



- Step #4 - Rhubarb Stalk
- Step #3 - Rose Bud
- Step #2 - Angel Pink 2x's
- Step #1 - Angel Pink

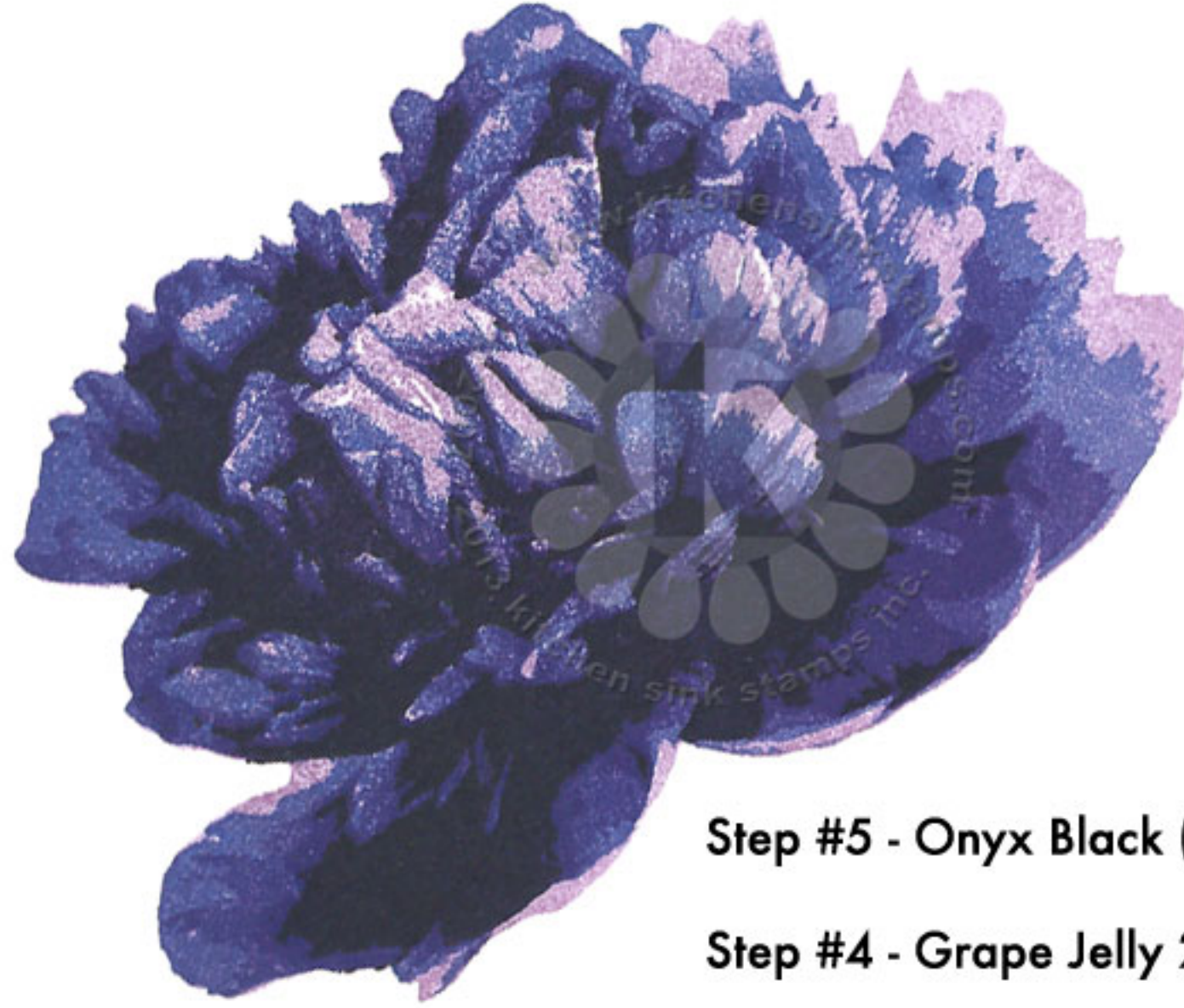


- Step #5 - Grape Jelly
- Step #4 - Sweet Plum
- Step #3 - Rhubarb Stalk
- Step #2 - Lady Bug
- Step #1 - Angel Pink 2x's



- Step #4 - Grape Jelly
- Step #3 - Rhubarb Stalk
- Step #2 - Lady Bug
- Step #1 - Angel Pink 2x's

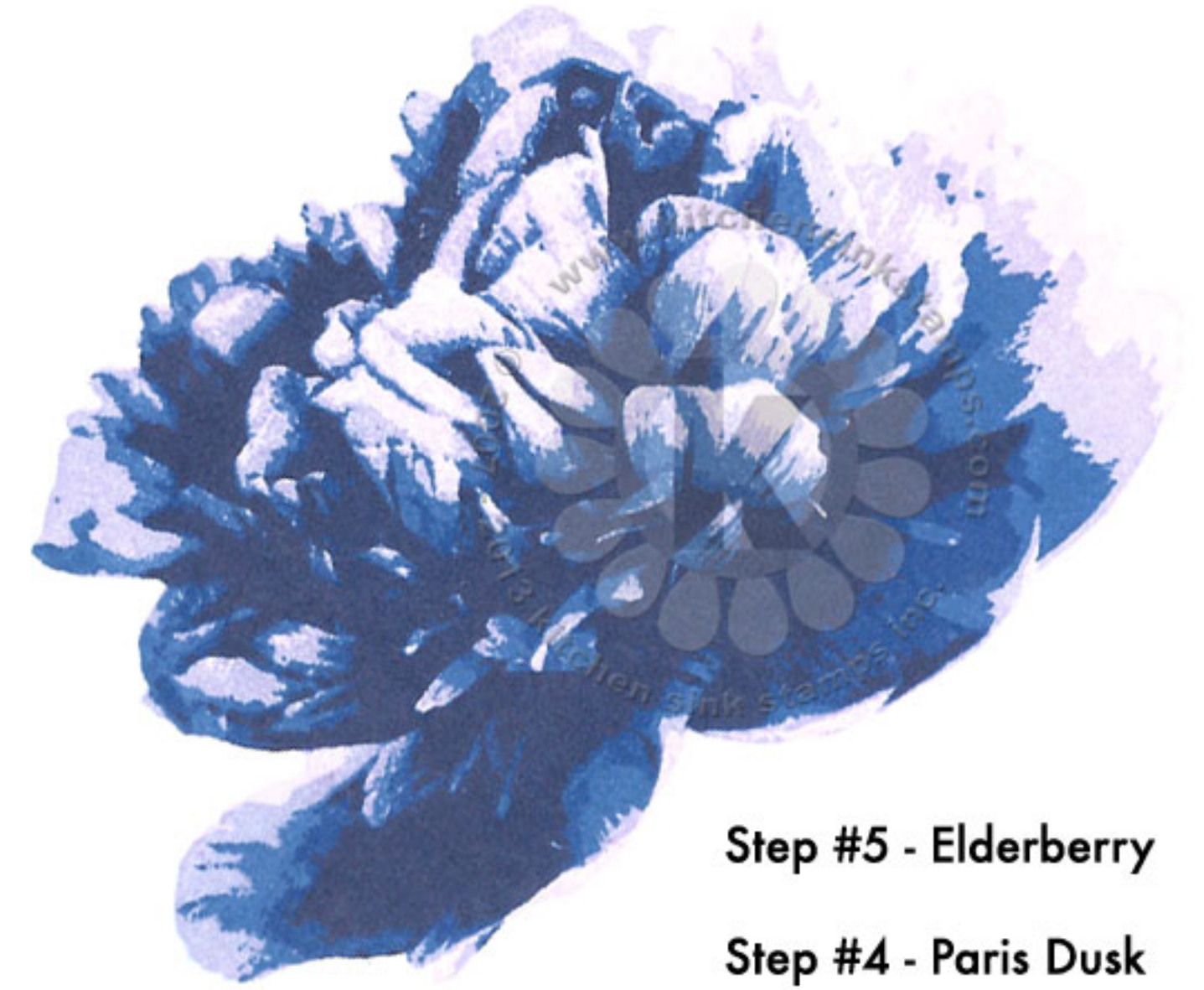
Multi Step™ Grand Peony - stamped in order from top to bottom
 All inks used - Memento (unless noted)



- Step #5 - Onyx Black (VersaFine)
- Step #4 - Grape Jelly 2x's
- Step #3 - Grape Jelly
- Step #2 - Paris Dusk
- Step #1 - Sweet Plum



- Step #4 - Paris Dusk
- Step #3 - Danube Blue
- Step #2 - Summer Sky + Lulu Lavender
- Step #1 - Summer Sky



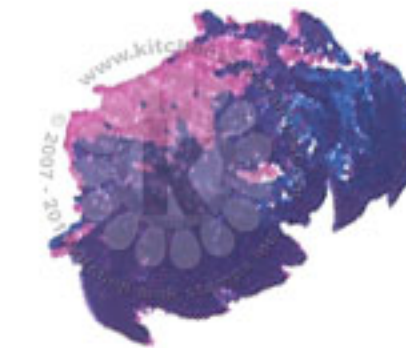
- Step #5 - Elderberry
- Step #4 - Paris Dusk
- Step #3 - Danube Blue
- Step #2 - Summer Sky + Lulu Lavender
- Step #1 - Lulu Lavender



- Step #4 - Northern Pine
- Step #3 - Olive Grove
- Step #2 - Pistachio 2x's
- Step #1 - Pistachio



- Step #5 - Onyx Black (VersaFine) + Elderberry
- Step #4 - Grape Jelly + Sweet Plum
- Step #3 - Grape Jelly
- Step #2 - Paris Dusk
- Step #1 - Lilac Posies



- Step #4 - Grape Jelly 2x's
- Step #3 - Grape Jelly
- Step #2 - Paris Dusk
- Step #1 - Lilac Posies

Multi Step™ Grand Peony - stamped in order from top to bottom
 All inks used - Memento (unless noted)



- Step #5 - Potter's Clay
- Step #4 - Morocco
- Step #3 - Tangelo
- Step #2 - Cataloupe 2x's
- Step #1 - Cataloupe



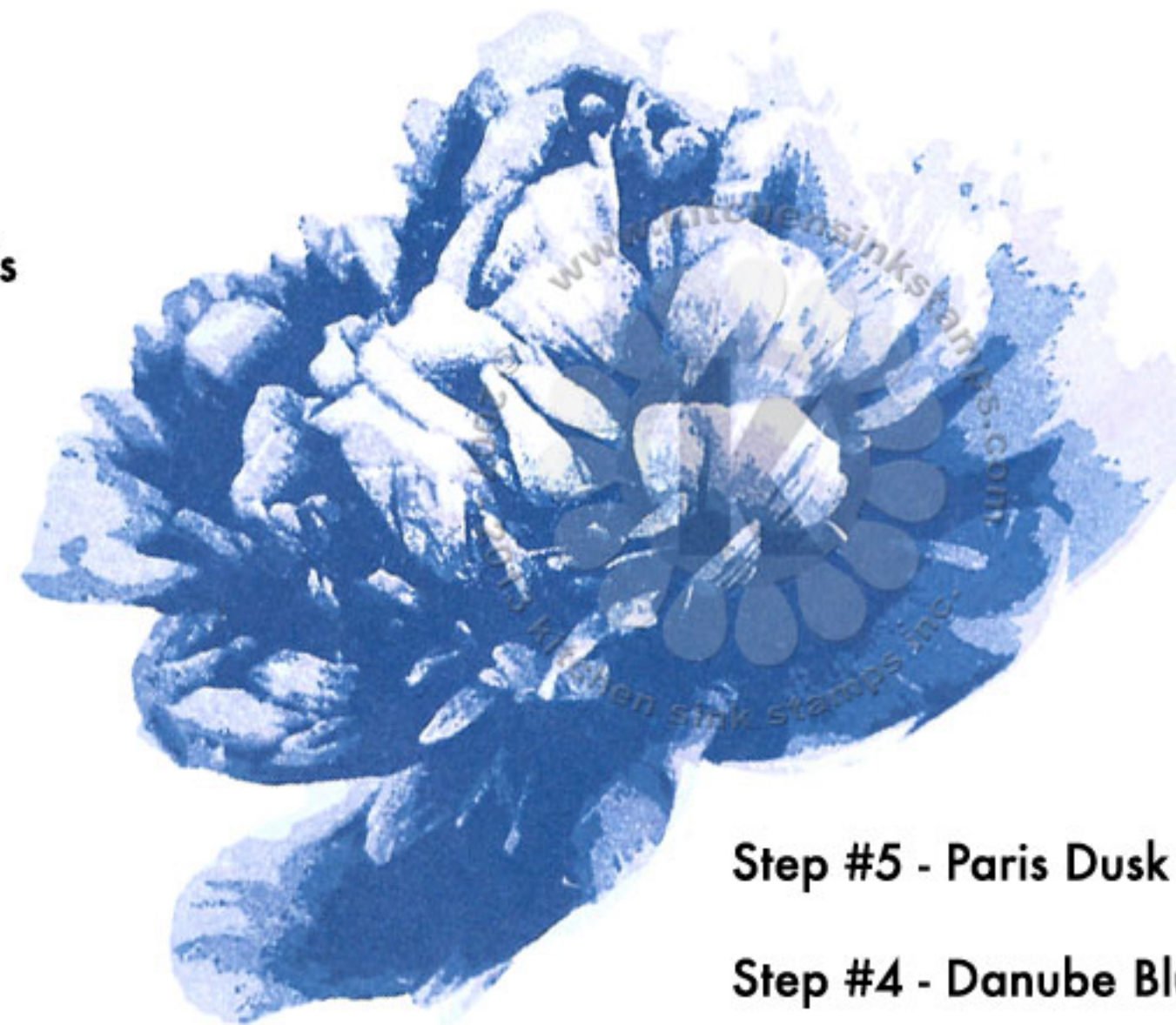
- Step #4 - Morocco
- Step #3 - Tangelo
- Step #2 - Cataloupe 2x's
- Step #1 - Cataloupe



- Step #3 - Cottage Ivy
- Step #2 - Bamboo Leaves
- Step #1 - Pear Tart



- Step #4 - Northern Pine
- Step #3 - Cottage Ivy
- Step #2 - Bamboo Leaves
- Step #1 - Pear Tart



- Step #5 - Paris Dusk
- Step #4 - Danube Blue
- Step #3 - Paris Dusk stamp off 1x
- Step #2 - Summer Sky + Lulu Lavender
- Step #1 - Summer Sky



- Step #3 - Olive Grove
- Step #2 - Pistachio 2x's
- Step #1 - Pistachio