

**Multi Step™ Alpine Mountains** - stamped in order from top to bottom  
 All inks used - Memento (unless noted)



- Step #3 - London Fog
- Step #2 - Summer Sky 2x's
- Step #1 - Summer Sky



- Step #4 - London Fog
- Step #3 - Summer Sky 3x's
- Step #2 - Summer Sky 2x's
- Step #1 - Summer Sky



- Step #4 - Sweet Plum
- Step #3 - London Fog + Lulu Lavender
- Step #2 - Lulu Lavender 2x's
- Step #1 - Lulu Lavender



- Step #3 - London Fog
- Step #2 - Lulu Lavender 2x's
- Step #1 - Lulu Lavender + Summer Sky



- Step #3 - London Fog 2x's
- Step #2 - London Fog + Summer Sky
- Step #1 - London Fog



- Step #4 - London Fog 3x's
- Step #3 - London Fog 2x's
- Step #2 - London Fog
- Step #1 - Summer Sky

**Multi Step™ Alpine Mountains** - stamped in order from top to bottom  
 All inks used - Memento (unless noted)



**Step #3 - Paris Dusk**

**Step #2 - London Fog 2x's**

**Step #1 - Summer Sky**



**Step #4 - Paris Dusk**

**Step #3 - Paris Dusk stamp off 1x + London Fog**

**Step #2 - London Fog**

**Step #1 - Summer Sky**



**Step #4 - Teal Zeal**

**Step #3 - Teal Zeal stamp off 1x, repeat 2x's**

**Step #2 - Bahama Blue stamp off 1x**

**Step #1 - Summer Sky**



**Step #3 - Teal Zeal stamp off 1x, repeat**

**Step #2 - Bahama Blue stamp off 1x**

**Step #1 - Summer Sky**



**Step #3 - Sweet Plum**

**Step #2 - London Fog + Lulu Lavender**

**Step #1 - Lulu Lavender**



**Step #4 - Sweet Plum 2x's**

**Step #3 - Sweet Plum 2x's**

**Step #2 - Sweet Plum stamp off 1x + Lulu Lavender**

**Step #1 - Lulu Lavender**

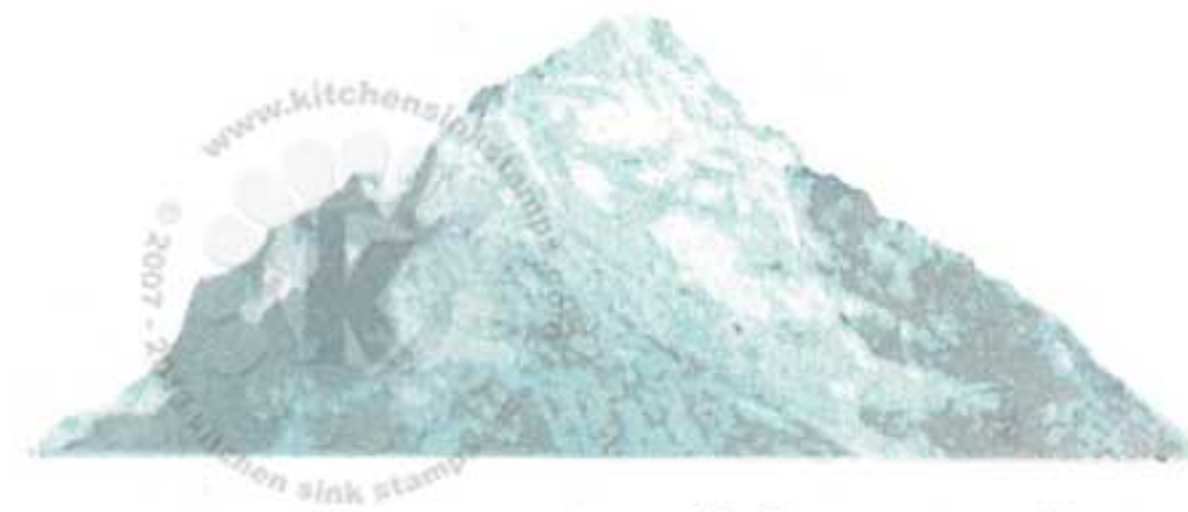
**Multi Step™ Alpine Mountains** - stamped in order from top to bottom  
 All inks used - Catherine Pooler (unless noted)



**Step #3 - Twilight stamp off 1x, repeat**

**Step #2 - Hot Tub stamp off 1x, repeat**

**Step #1 - Hot Tub stamp off 2x's**

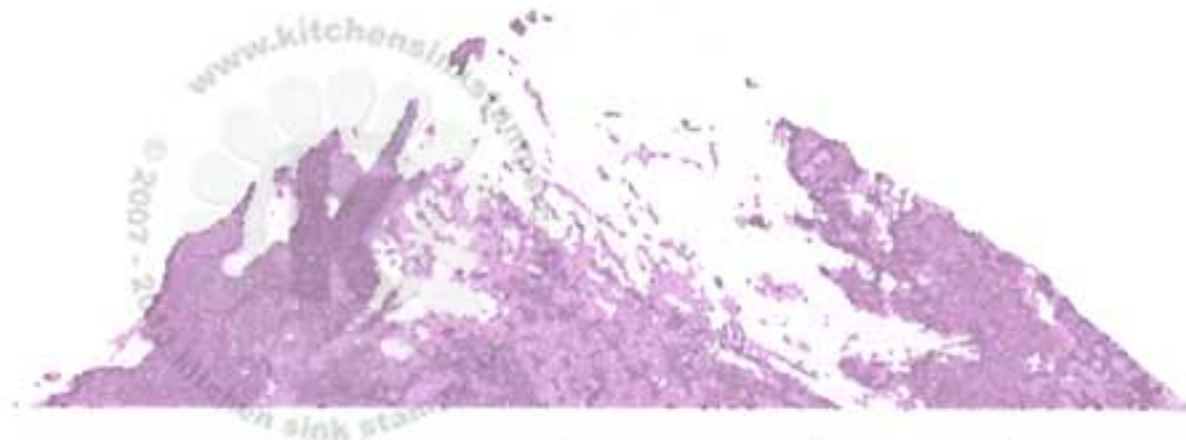


**Step #4 - Twilight stamp off 1x, repeat**

**Step #3 - Stone Blue stamp off 1x, repeat**

**Step #2 - Hot Tub stamp off 1x, repeat**

**Step #1 - Stone Blue stamp off 1x**



**Step #4 - Sugared Lavender stamp off 1x, repeat**

**Step #3 - Sugared Lavender stamp off 1x**

**Step #2 - Sweet Sixteen stamp off 1x, repeat**

**Step #1 - Sweet Sixteen stamp off 1x**



**Step #3 - Sugared Lavender stamp off 1x**

**Step #2 - Sweet Sixteen stamp off 1x, repeat**

**Step #1 - Sweet Sixteen stamp off 1x**



**Step #3 - Twilight stamp off 1x**

**Step #2 - Stone Blue stamp off 1x**

**Step #1 - Stone Blue stamp off 2x's**



**Step #4 - Twilight stamp off 1x, repeat**

**Step #3 - Stone Blue stamp off 1x, repeat**

**Step #2 - Stone Blue stamp off 1x**

**Step #1 - Stone Blue stamp off 2x's**

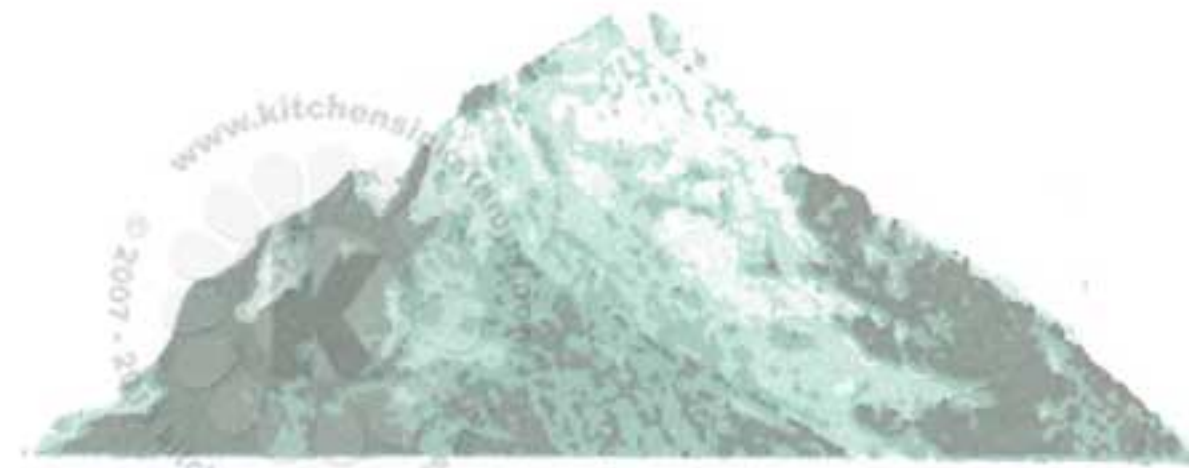
**Multi Step™ Alpine Mountains** - stamped in order from top to bottom  
 All inks used - Catherine Pooler (unless noted)



**Step #3 - Twilight**

**Step #2 - Twilight stamp off 1x**

**Step #1 - Stone Blue stamp off 1x**

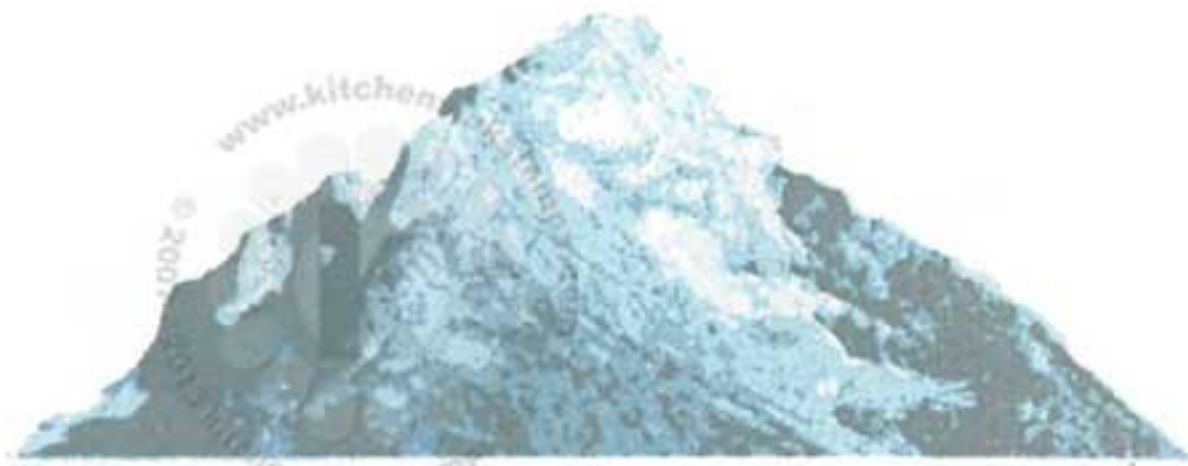


**Step #4 - Twilight**

**Step #3 - Hot Tub**

**Step #2 - Hot Tub stamp off 1x, repeat**

**Step #1 - Hot Tub stamp off 1x**



**Step #4 - Twilight**

**Step #3 - Stone Blue**

**Step #2 - Stone Blue stamp off 1x, repeat**

**Step #1 - Stone Blue stamp off 1x**



**Step #3 - Twilight**

**Step #2 - Stone Blue**

**Step #1 - Hot Tube stamp off 1x**



**Step #3 - Sugared Lavender**

**Step #2 - Sweet Sixteen**

**Step #1 - Sweet Sixteen stamp off 1x, repeat**



**Step #4 - Sugared Lavender**

**Step #3 - Sugared Lavender stamp off 1x, repeat**

**Step #2 - Sweet Sixteen**

**Step #1 - Sweet Sixteen stamp off 1x, repeat**