

Multi Step™ Graceful Swan - stamped in order from top to bottom
 All inks used - Memento (unless noted)



- Step #3 - London Fog
- Step #4 - London Fog 2x's
- Step #5 - Gray Flannel
- Step #6 - Gray Flannel 2x's
- Step #7 - Nocturne (VersaFine Clair)
- Step #2 - London Fog stamp off 1x, repeat + Summer Sky
- Step #1 - Summer Sky (wings only)



- Step #1 - Gray Flannel
- Step #2 - Gray Flannel 2x's
- Step #3 - Gray Flannel 3x's + Paris Dusk stamp off 1x
- Step #4 - Paris Dusk
- Step #5 - Elderberry
- Step #6 - Pinecone (VersaFine Clair)
- Step #7 - Nocturne (VersaFine Clair) and Ultra Fine Black embossing powder



- Step #3 - London Fog
- Step #4 - London Fog 2x's
- Step #5 - Gray Flannel - body and head only
Tangelo - beak only
- Step #6 - Gray Flannel 2x's - body and head only
Potter's Clay- beak only
- Step #7 - Nocturne (VersaFine Clair)
- Step #2 - London Fog stamp off 1x + Summer Sky
- Step #1 - Summer Sky (wings only)



Step #5



Step #6

Multi Step™ Graceful Swan - stamped in order from top to bottom
 All inks used - Memento (unless noted)



- Step #1 - Angel Pink
- Step #2 - Rose Bud stamp off 1x
- Step #3 - Rose Bud stamp off 1x, repeat
- Step #4 - Rose Bud
- Step #5 - Rose Bud 2x's
- Step #6 - Love Letter
- Step #7 - Nocturne (VersaFine Clair)



- Step #1 - Summer Sky
- Step #2 - Summer Sky 2x's
- Step #3 - Danube Blue stamp off 1x
- Step #4 - Danube Blue stamp off 1x, repeat
- Step #5 - Danube Blue
- Step #6 - Paris Dusk
- Step #7 - Nocturne (VersaFine Clair)



- Step #3 - Lulu Lavender
+Sweet Plum stamp off 1x
- Step #4 - Sweet Plum
- Step #5 - Sweet Plum 2x's
- Step #6 - Grape Jelly
- Step #7 - Nocturne (VersaFine Clair)
- Step #2 - Lulu Lavender 2x's
- Step #1 - Lulu Lavender

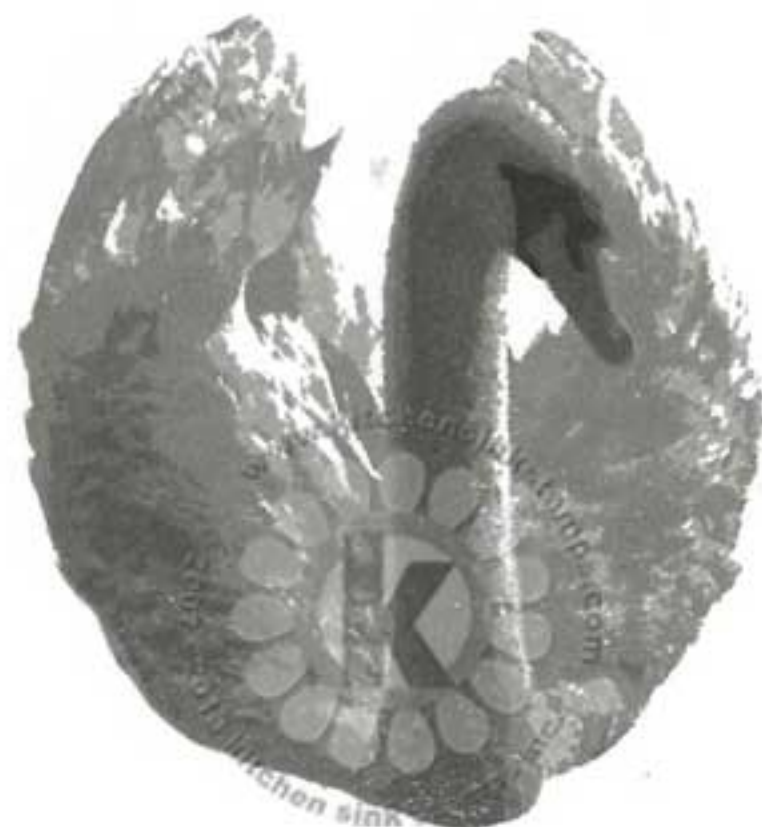


- Step #1 - Gray Flannel
- Step #2 - Gray Flannel
- Step #3 - Gray Flannel
- Step #4 - Gray Flannel
- Step #5 - Gray Flannel 2x's
- Step #6 - Paris Dusk stamp off 1x
- Step #7 - Nocturne (VersaFine Clair)

Multi Step™ Graceful Swan - stamped in order from top to bottom
 All inks used - Catherrine Pooler (unless noted)



- Step #1 - Hot Tub stamp off 1x
- Step #2 - Twilight stamp off 1x, repeat
- Step #3 - Twilight stamp off 1x, repeat 2x's
- Step #4 - Hot Tub
- Step #5 - Stone Blue
- Step #6 - Twilight
- Step #7 - Nocturne (VersaFine Clair)



- Step #1 - Twilight
- Step #2 - Twilight 2x's
- Step #3 - Twilight 3x's
- Step #4 - Black Jack stamp off 1x, repeat
- Step #5 - Hot Tub
- Step #6 - Black Jack
- Step #7 - Nocturne (VersaFine Clair)



- Step #1 - Twilight stamp off 1x
- Step #2 - Twilight stamp off 1x, repeat
- Step #3 - Twilight
- Step #4 - Twilight 2x's
- Step #5 - Black Jack stamp off 1x (body and head only)
Orange Twist (beack only)
- Step #6 - Black Jack stamp off 1x, repeat
(body and head only)
Mandarine Spice (beack only)
- Step #7 - Nocturne (VersaFine Clair)



Step #5



Step #6

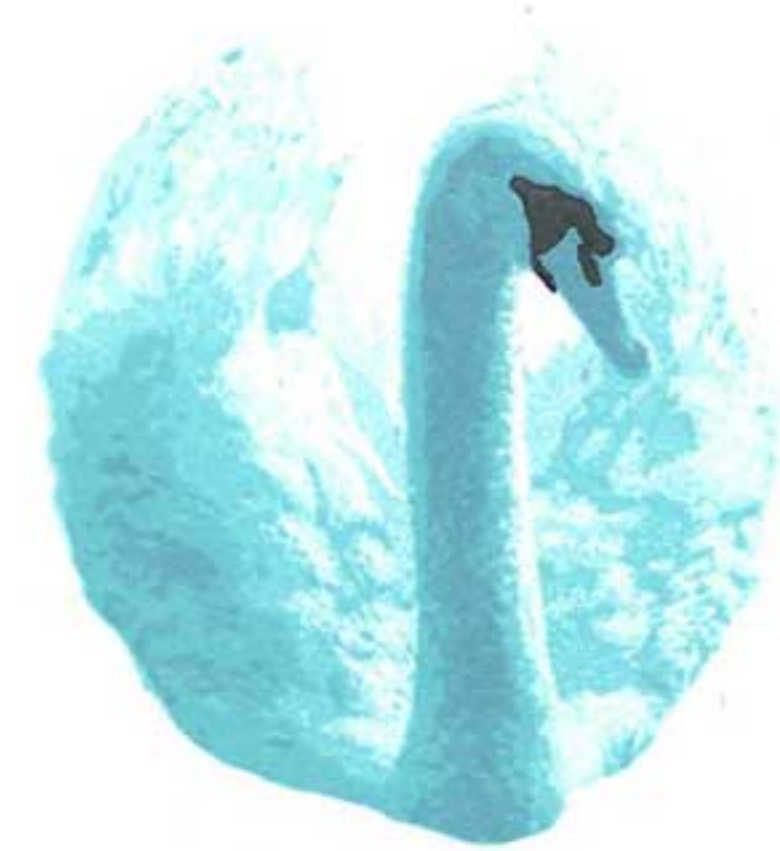
Multi Step™ Graceful Swan - stamped in order from top to bottom
All inks used - Catherrine Pooler (unless noted)



- Step #1 - Sweet Sixteen stamp off 1x
- Step #2 - Sweet Sixteen stamp off 1x, repeat
- Step #3 - Sweet Sixteen
- Step #4 - Sweet Sixteen 2x's
- Step #5 - Pink Champagne
- Step #6 - Rose Petals
- Step #7 - Nocturne (VersaFine Clair)



- Step #1 - It's a Girl stamp off 1x
- Step #2 - It's a Girl stamp off 1x, repeat
- Step #3 - It's a Girl
- Step #4 - It's a Girl 2x's
- Step #5 - Be Mine stamp off 1x, repeat
- Step #6 - Be Mine
- Step #7 - Nocturne (VersaFine Clair)



- Step #1 - It's a Boy stamp off 1x
- Step #2 - It's a Boy stamp off 1x, repeat
- Step #3 - It's a Boy
- Step #4 - It's a Boy 2x's
- Step #5 - Stone Blue stamp off 1x, repeat
- Step #6 - Stone Blue
- Step #7 - Nocturne (VersaFine Clair)