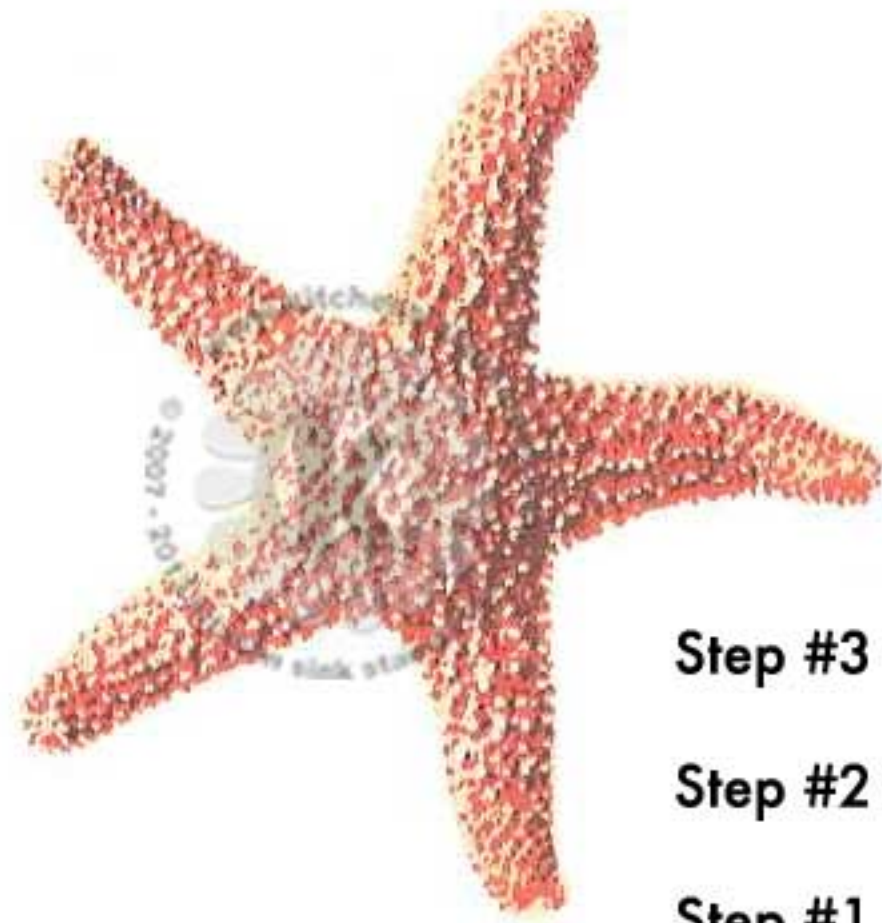


Multi Step™ Beachcomber's Bounty - stamped in order from top to bottom
 All inks used - Memento (unless noted)



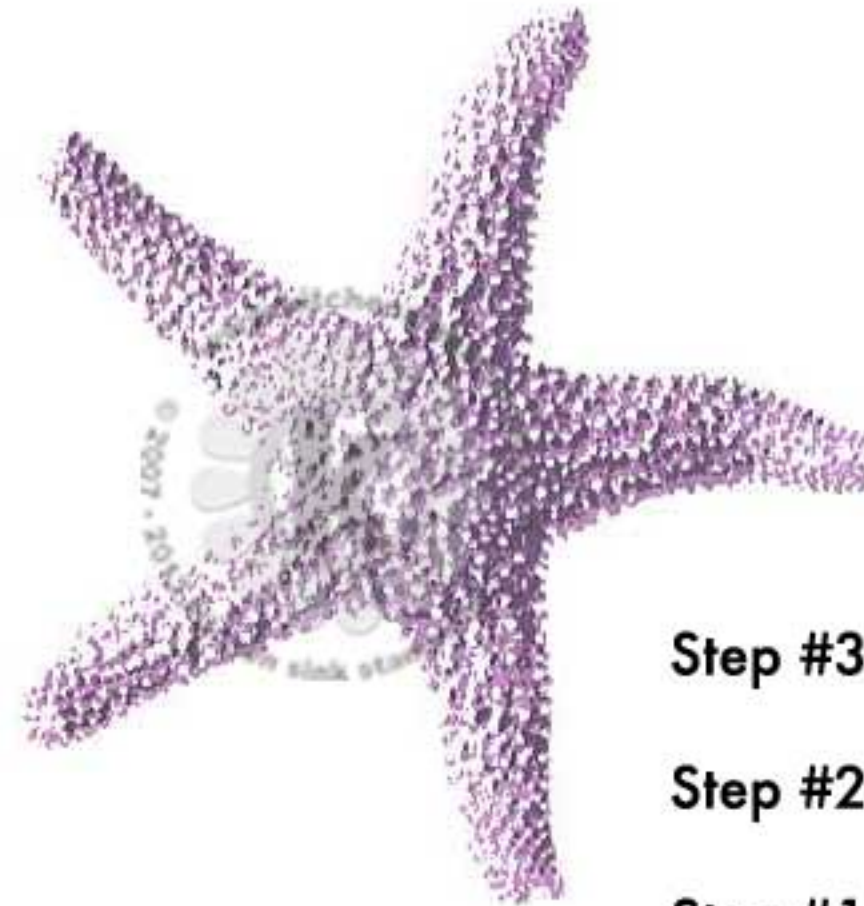
Step #3 - Rich Coca
 Step #2 - Morocco
 Step #1 - Dandelion



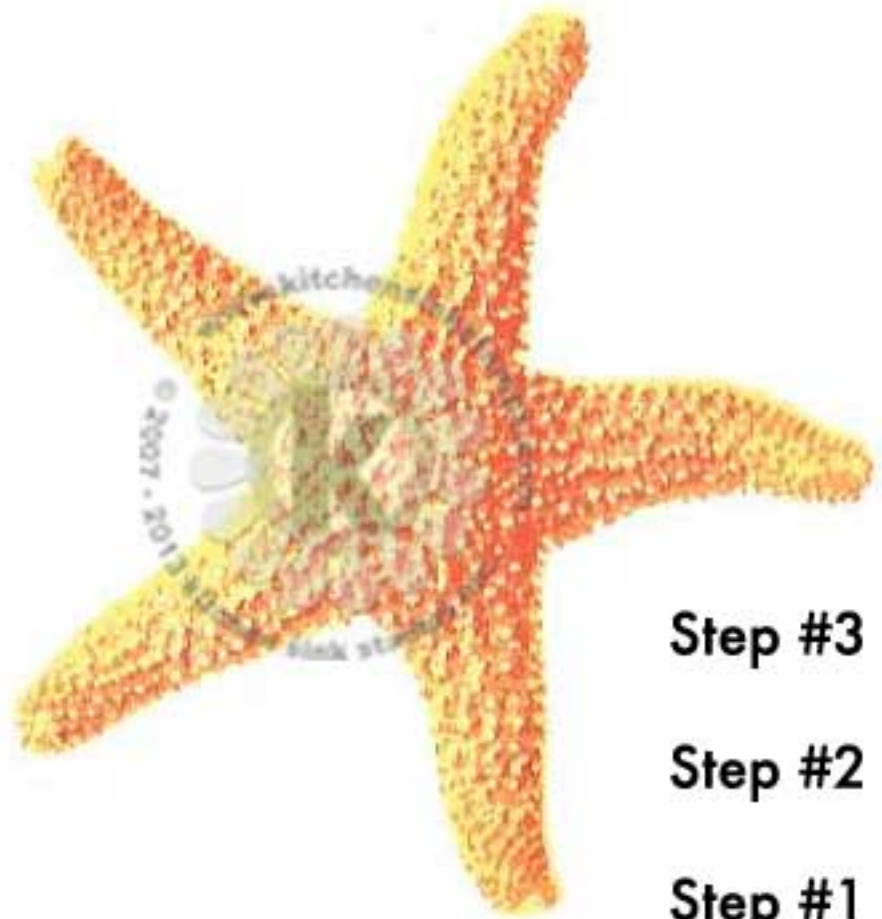
Step #3 - Rich Coca
 Step #2 - Morocco
 Step #1 - Tangelo



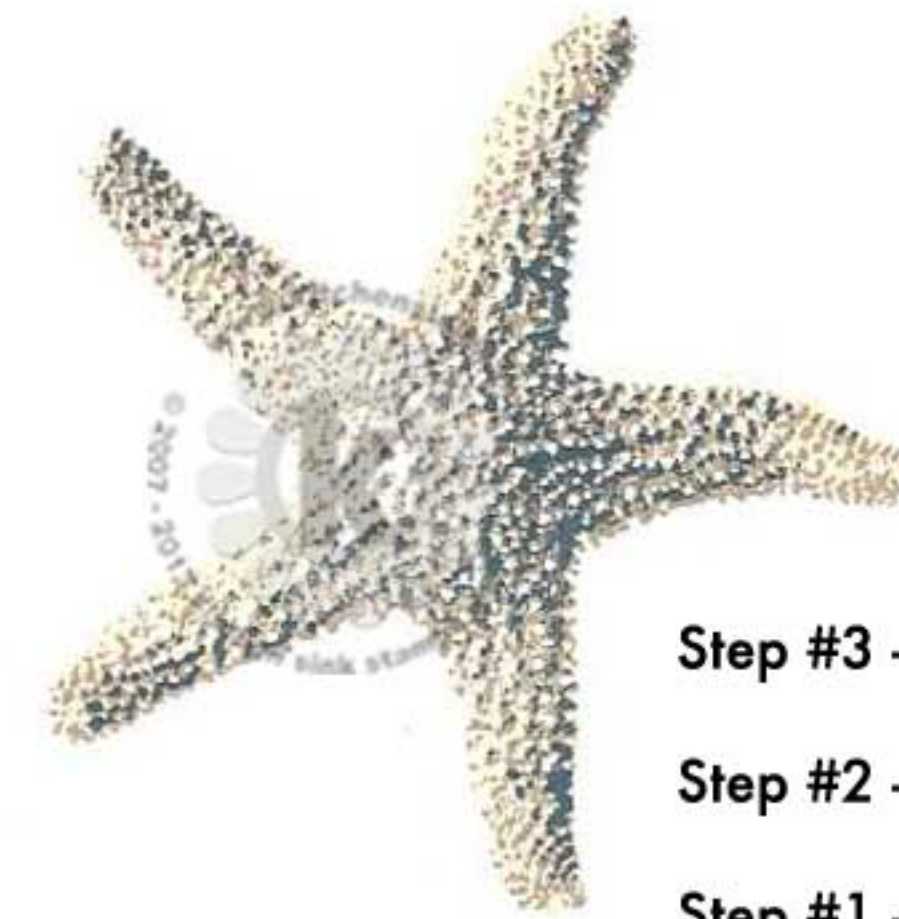
Step #3 - Elderberry
 Step #2 - Lilac Posies
 Step #1 - Rose Bud



Step #3 - Elderberry
 Step #2 - Sweet Plum
 Step #1 - Lulu Lavender



Step #3 - Morocco
 Step #2 - Tangelo
 Step #1 - Cantaloupe



Step #3 - Nautical Blue
 Step #2 - Toffee Crunch
 Step #1 - Desert Sand



Step #3 - Grape Jelly
 Step #2 - Love Letter
 Step #1 - Lady Bug



Step #3 - Nautical Blue
 Step #2 - Sweet Plum
 Step #1 - Lulu Lavender 2x's



Step #3 - Elderberry
 Step #2 - Lilac Posies
 Step #1 - Rose Bud

Multi Step™ Beachcomber's Bounty - stamped in order from top to bottom
 All inks used - Memento (unless noted)



- Step #4 - Lilac Posies 2x's
- Step #3 - Sweet Plum
- Step #2 - Lulu Lavender
- Step #1 - Cantaloupe



- Step #3 - Lilac Posies 2x's
- Step #2 - Sweet Plum
- Step #1 - Rose Bud



- Step #3 - Nautical Blue
- Step #2 - Bahama Blue
- Step #1 - Bahama Blue stamp off 1x

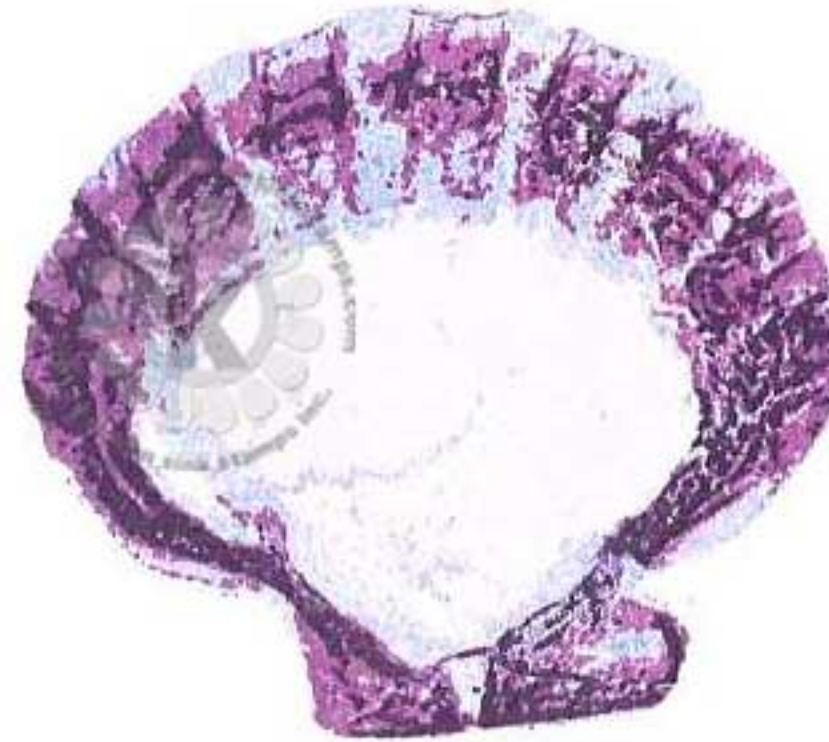
- Step #4 - Gray Flannel
- Step #3 - Toffee Crunch
- Step #2 - Desert Sand
- Step #1 - Cantaloupe



- Step #4 - Nautical Blue
- Step #3 - Danube Blue
- Step #2 - Danube Blue stamp off 1x
- Step #1 - Summer Sky



- Step #4 - Rich Coca
- Step #3 - Morocco
- Step #2 - Tangelo
- Step #1 - Cantaloupe + Dandelion



- Step #4 - Elderberry
- Step #3 - Lilac Posies
- Step #2 - Danube Blue stamp off 1x
- Step #1 - Angel Pink



- Step #3 - Sweet Plum
- Step #2 - Lulu Lavender 2x's
- Step #1 - Angel Pink



- Step #3 - Gray Flannel
- Step #2 - Toffee Crunch
- Step #1 - Desert Sand



- Step #3 - Elderberry
- Step #2 - London Fog
- Step #1 - Desert Sand

Multi Step™ Beachcomber's Bounty - stamped in order from top to bottom
 All inks used - Memento (unless noted)



Step #4 - Rich Coca

Step #3 - Toffee Crunch

Step #2 - Cantaloupe 2x's

Step #1 - Desert Sand



Step #3 - Desert Sand 2x's

Step #2 - Desert Sand

Step #1 - Cantaloupe



Step #4 - Elderberry

Step #3 - Gray Flannel

Step #2 - Desert Sand

Step #1 - Desert Sand stamp off 1x, repeat



Step #4 - Nautical Blue

Step #3 - Sweet Plum

Step #2 - Lulu Lavender 2x's

Step #1 - Summer Sky

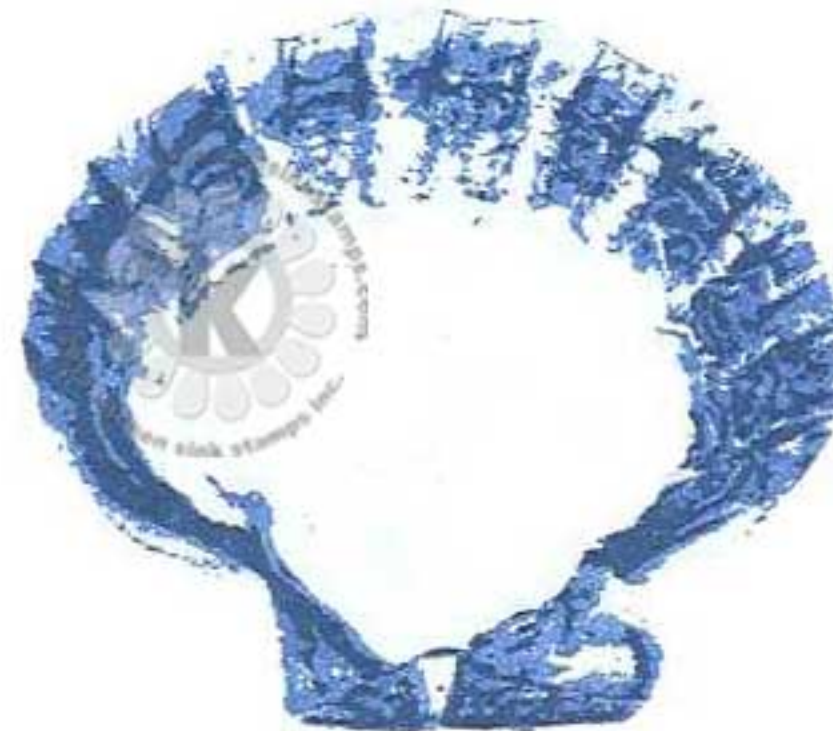


Step #4 - Elderberry

Step #3 - Lilac Posies

Step #2 - Rose Bud

Step #1 - Angel Pink



Step #4 - Nautical Blue

Step #3 - Danube Blue

Step #2 - Danube Blue
stamp off 1x

Step #1 - Summer Sky



Step #3 - Gray Flannel

Step #2 - London Fog 2x's

Step #1 - Danube Blue
stamp off 1x

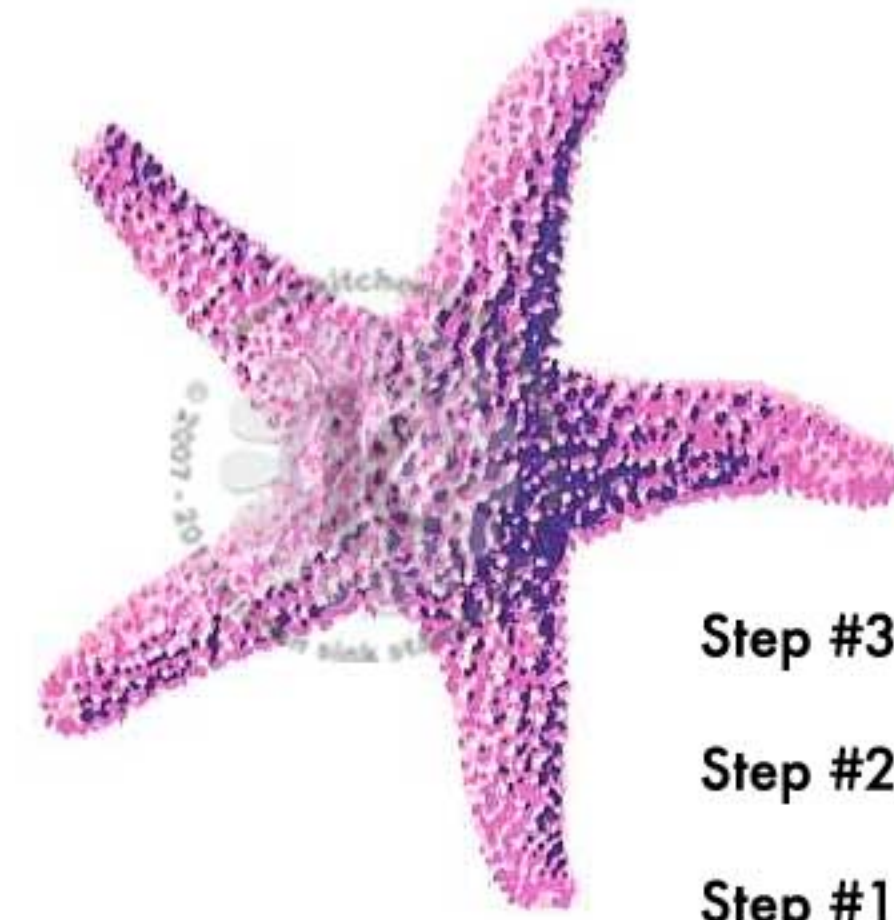
Multi Step™ Beachcomber's Bounty - stamped in order from top to bottom
 All inks used - Catherine Pooler (unless noted)



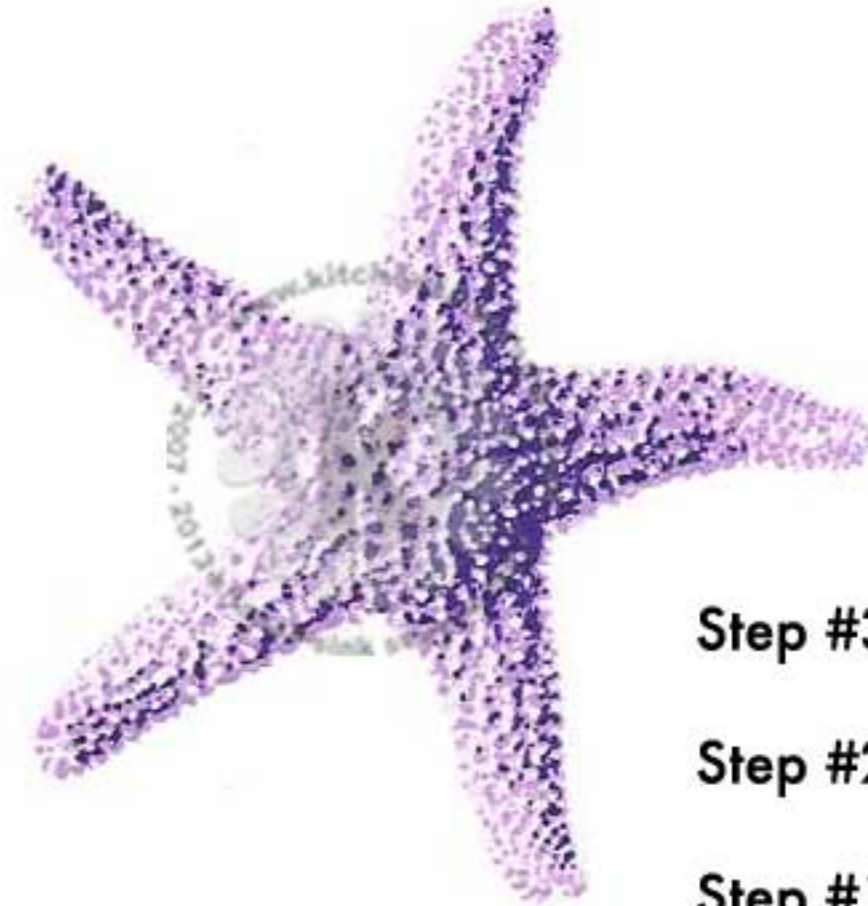
Step #3 - Icing on the Cake
 Step #2 - Mandarin Spice
 Step #1 - Catching Rays



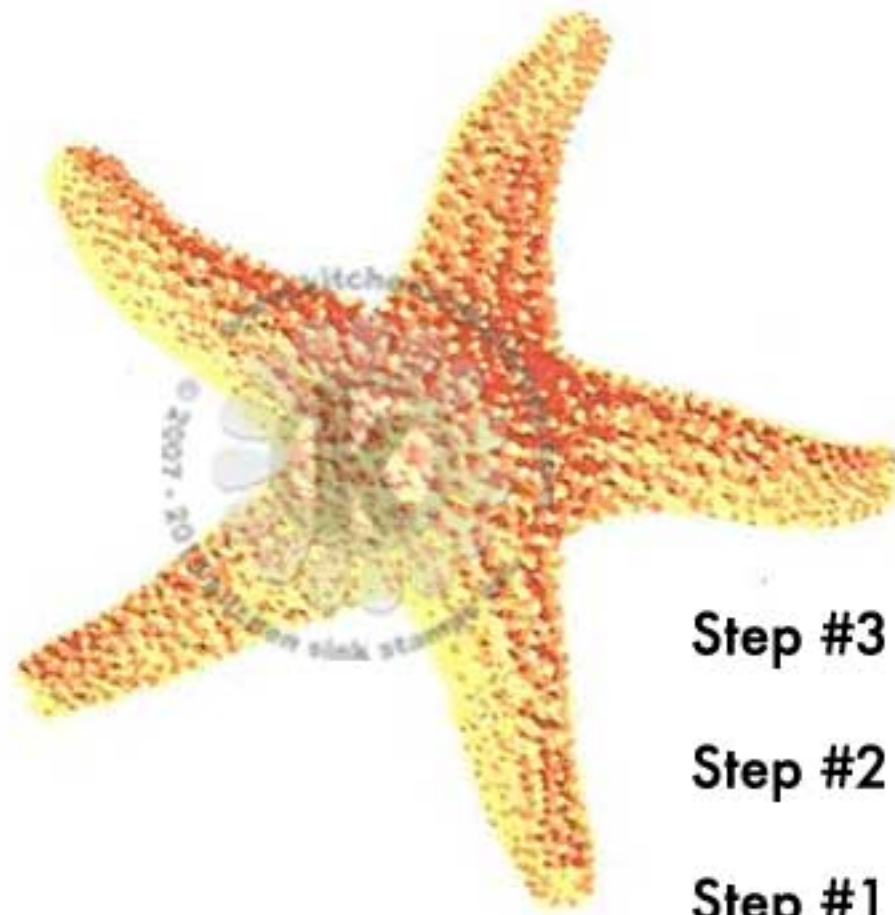
Step #3 - Over Coffee
 Step #2 - Mandarin Spice
 Step #1 - Tiki Torch



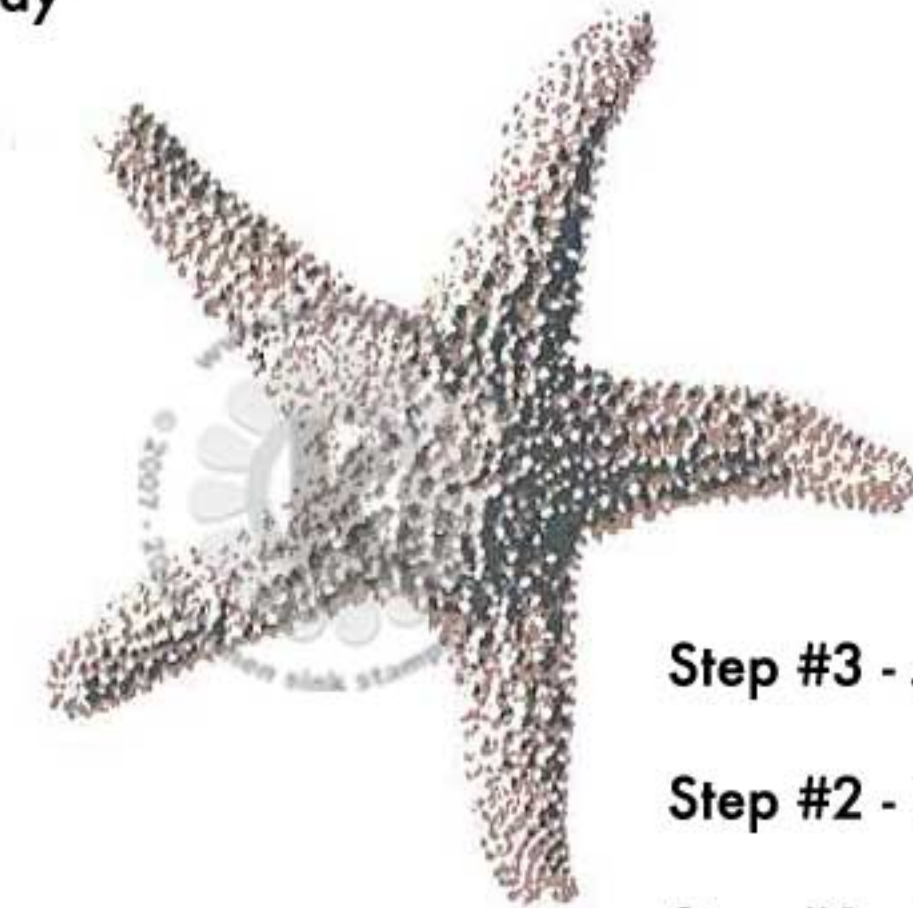
Step #3 - Queen for a Day
 Step #2 - Pucker Up
 Step #1 - It's a Girl



Step #3 - Queen for a Day
 Step #2 - Pixie Dust
 Step #1 - Sweet Sixteen



Step #3 - Mandarin Spice
 Step #2 - Tiki Torch
 Step #1 - Chiffon



Step #3 - Juniper Mist
 Step #2 - Sand Castle 2x's
 Step #1 - Sand Castle stamp off 1x



Step #3 - Grape Crush
 Step #2 - Rockin' Red
 Step #1 - Pink Champagne



Step #3 - Grape Crush
 Step #2 - Flirty Fuchsia
 Step #1 - Pixie Dust



Step #3 - Juniper Mist
 Step #2 - Serenade
 Step #1 - Serene

Multi Step™ Beachcomber's Bounty - stamped in order from top to bottom
 All inks used - Catherine Pooler (unless noted)



Step #4 - Sangria
 Step #3 - Be Mine
 Step #2 - Tranquil
 Step #1 - It's a Girl
 stamp off 1x



Step #3 - Rose Petals
 Step #2 - Serene
 Step #1 - It's a Girl



Step #3 - Queen for a Day
 Step #2 - Twilight 2x's
 Step #1 - Tranquil 2x's

Step #4 - Twilight
 Step #3 - Sand Castle
 Step #2 - Shea Butter
 Step #1 - Chiffon



Step #4 - Juniper Mist
 Step #3 - Serenade
 Step #2 - Serene
 Step #1 - Tranquil



Step #4 - Over Coffee
 Step #3 - Mandarin Spice
 Step #2 - Tiki Torch
 Step #1 - Tiara



Step #4 - Over Coffee
 Step #3 - Sand Castle
 Step #2 - Tiara
 Step #1 - Sand Castle
 stamp off 1x



Step #3 - Sand Castle
 Step #2 - Sand Castle stamp off 1x, repeat
 Step #1 - Tiara

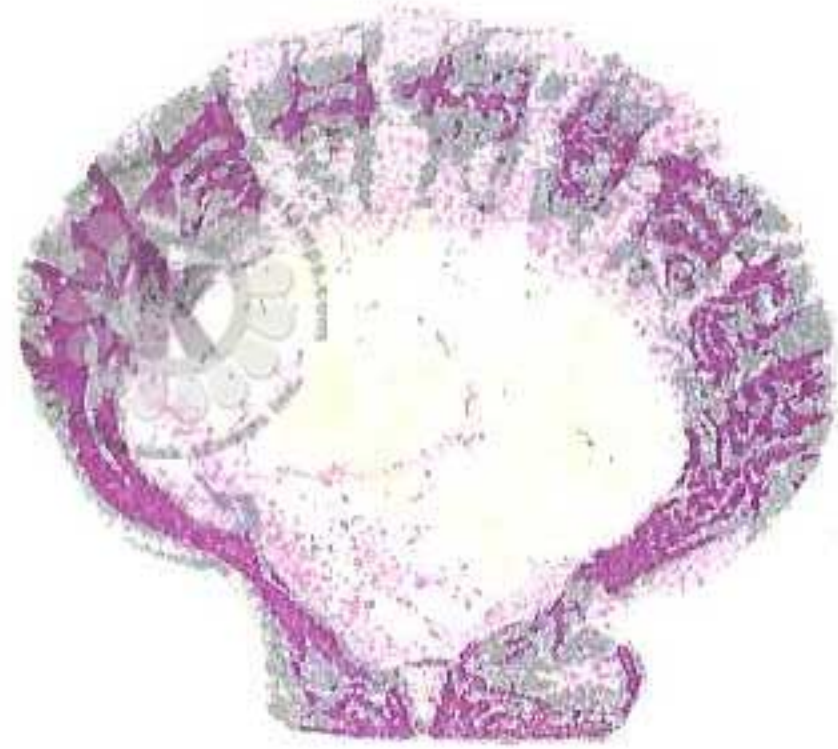


Step #3 - Twilight
 Step #2 - Sand Castle
 Step #1 - Shea Butter



Step #3 - Juniper Mist
 Step #2 - Stone Blue
 Step #1 - Hot Tub

Multi Step™ Beachcomber's Bounty - stamped in order from top to bottom
 All inks used - Catherine Pooler (unless noted)



Step #4 - Flirty Fuchsia

Step #3 - Hot Tube

Step #2 - Pink Champagne
stamp off 1x, repeat

Step #1 - Tiara stamp off 1x



Step #3 - Pucker Up

Step #2 - Hot Tub

Step #1 - Pink Champagne
stamp off 1x, repeat

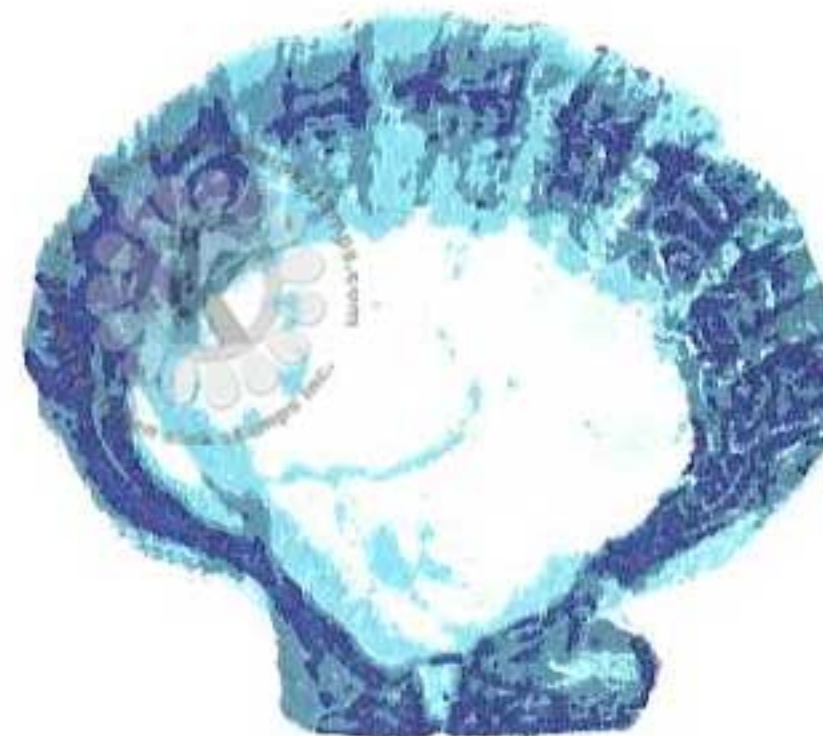


Step #4 - Grape Crush

Step #3 - Flirty Fuchsia

Step #2 - Pixie Dust

Step #1 - It's a Girl



Step #4 - Drive-In

Step #3 - Stone Blue 2x's

Step #2 - It's a Boy

Step #1 - Tranquil
stamp off 1x



Step #3 - Twilight

Step #2 - Tranquil

Step #1 - Be Mine stamp off 1x



Step #4 - Queen for a Day

Step #3 - Twilight 2x's

Step #2 - Tranquil 2x's

Step #1 - Stone Blue stamp off 1x



Step #4 - Juniper Mist

Step #3 - Stone Blue 2x's

Step #2 - Hot Tub

Step #1 - Tranquil